

CATALOGUE

EUROPRINT
TEXTILE CATALOGUE

Established in 2014, Europrint srl is a company specialized in textile finishing, printing techniques on fabric and garment, applications and cutting-edge processing, all the development process is aimed at the creation of a unique and high-end product, with a focus always on customer needs and new trends arising from the Italian and foreign market.

The headquarters is located in Ottaviano NA, in the heart of the textile district of Vesuviano, today it boasts collaborations with clothing companies throughout the Campania region and the entire national territory, helping with its work to perfect the concept of made in Italy and the quality it needs, offering a more and more targeted service to create custom prints on request and exclusive, always following up-to-date trends and offering graphic/stylistic advice adequate for every need. The many years of experience of all the workers and a well coordinated and competent staff, guarantee quality products and a fast and precise targeted service.



TEXTILE COLLECTION

Europrint has the primarily target to develop printed fabrics with high quality level and style values thanks to a skilled creative team combined with the most cutting-edge printing and finishing technologies. Today Europrint shows its leadership in the development of artistic proposals of printed fabrics for women's fashion among international brands, striving for style, excellence and innovation

The selection of raw materials is the milestone of our overall strategy as well as the first step towards the offer of high quality standard at each single stage of our production process, outlining the true value of the "Made in Italy" concept always taking care on eco-friendly process and products.

WOMAN

PRIMALINEA

TEXTILE

FALLWINTER

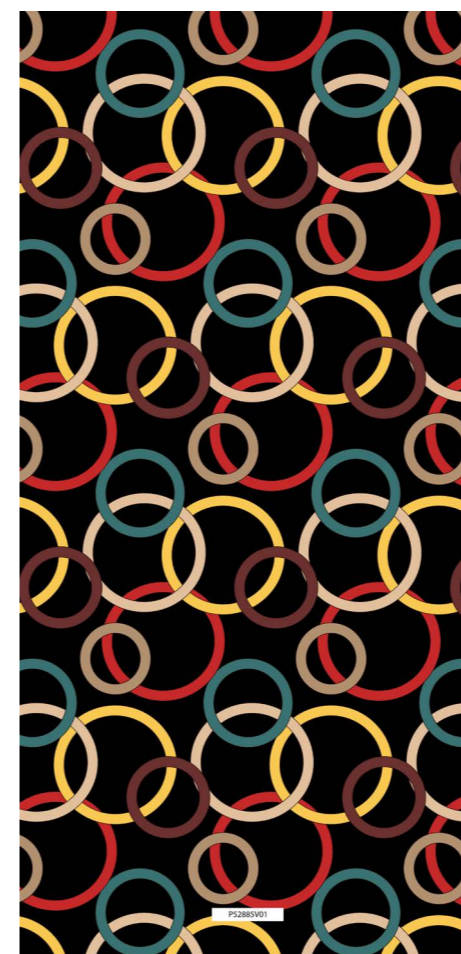
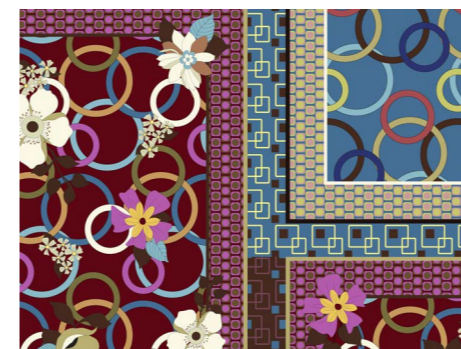
2024



FW · COLLECTION PRIMALINEA



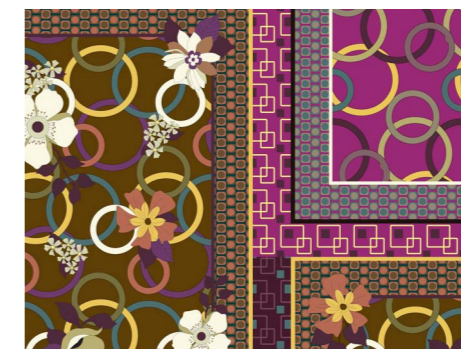
FW · WOMAN V02



FW · MATCHING¹
WOMAN



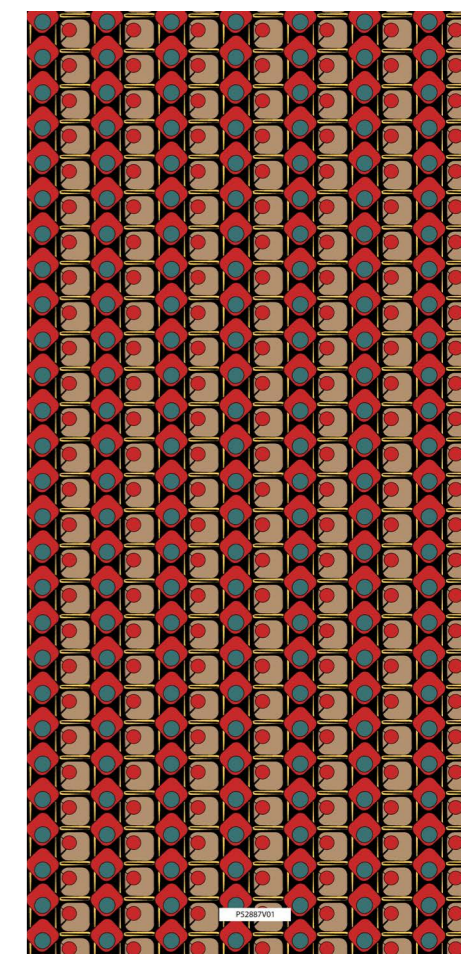
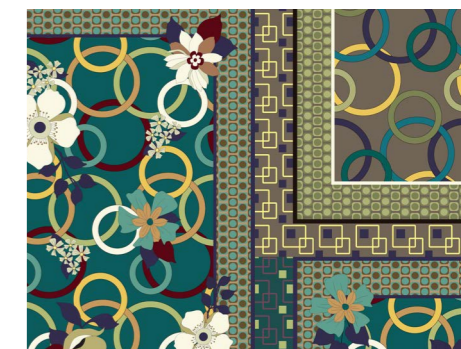
FW · WOMAN V03



FW · MATCHING²
WOMAN



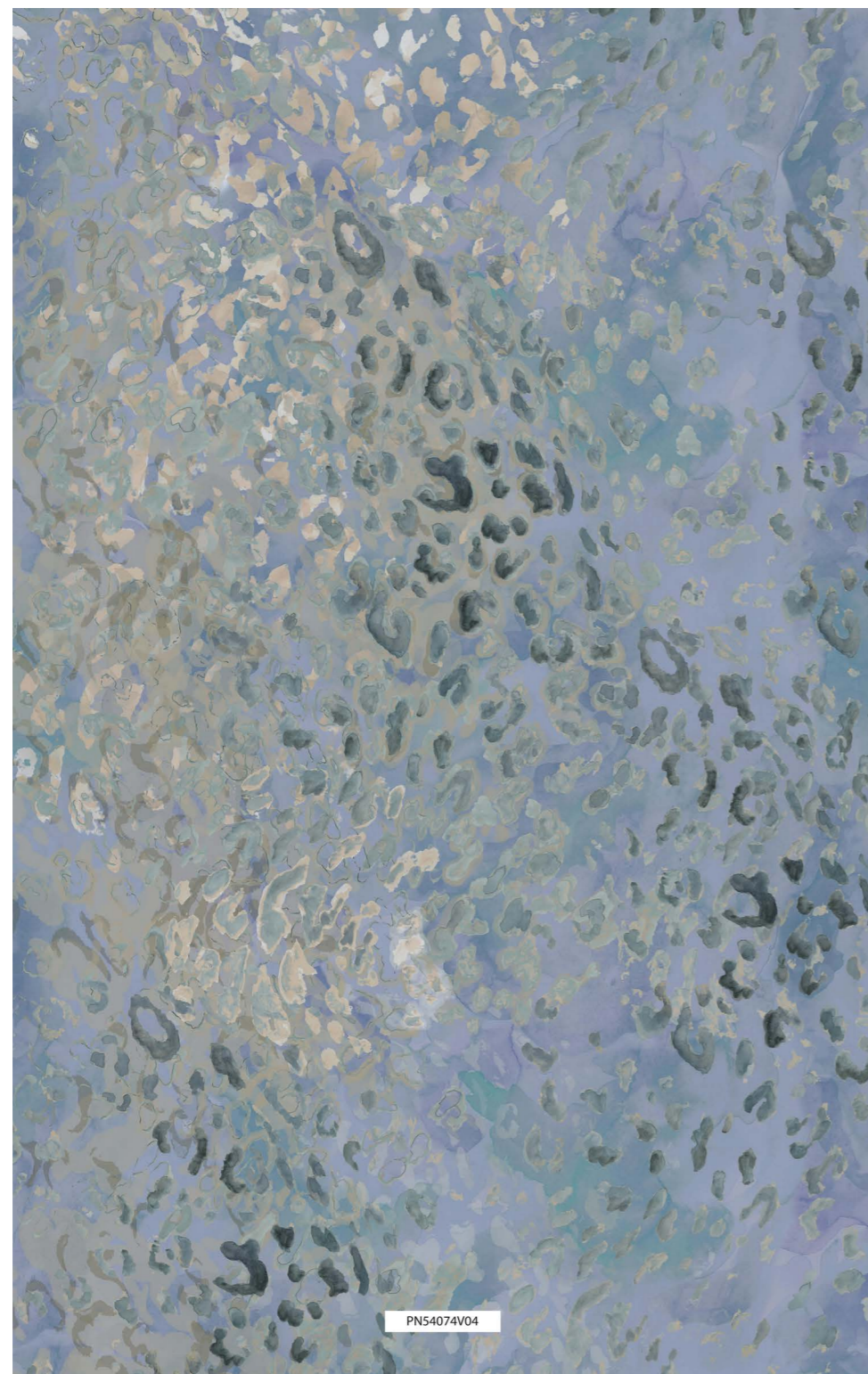
FW · WOMAN V04



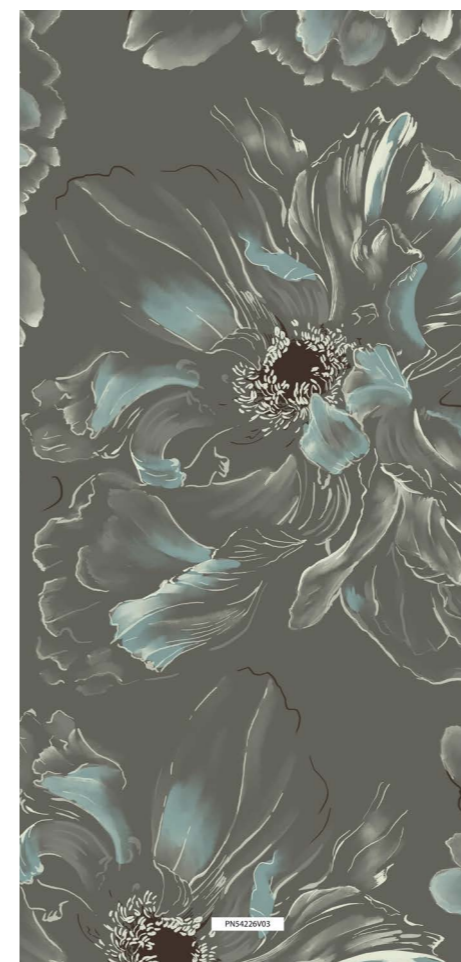
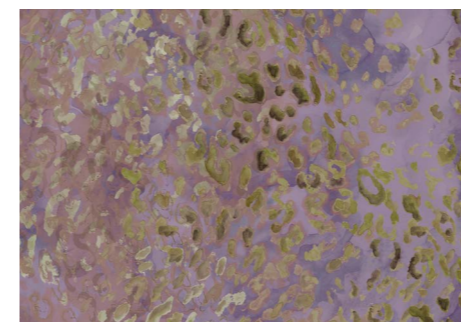
FW · MATCHING³
WOMAN



FW · COLLECTION PRIMALINEA



FW · WOMAN^{V02}



FW · MATCHING¹
WOMAN



FW · WOMAN^{V03}



FW · MATCHING²
WOMAN



FW · WOMAN^{V04}



FW · MATCHING³
WOMAN



P56232V01



FW · COLLECTION PRIMALINEA



P56241V02



FW · COLLECTION PRIMALINEA



P56232V02



FW · ETHNIC^{V02}
WOMAN



P56232V03



FW · ETHNIC^{V03}
WOMAN



P56232V04



FW · ETHNIC^{V04}
WOMAN



P56241V01



FW · ETHNIC^{V02}
WOMAN



P56241V03



FW · ETHNIC^{V03}
WOMAN



P56241V04



FW · ETHNIC^{V04}
WOMAN



↓ FW · COLLECTION PRIMALINEA



↓ FW · COLLECTION PRIMALINEA



↓ FW · ETHNIC WOMAN^{V02}



↓ FW · ETHNIC WOMAN^{V03}



↓ FW · ETHNIC WOMAN^{V04}



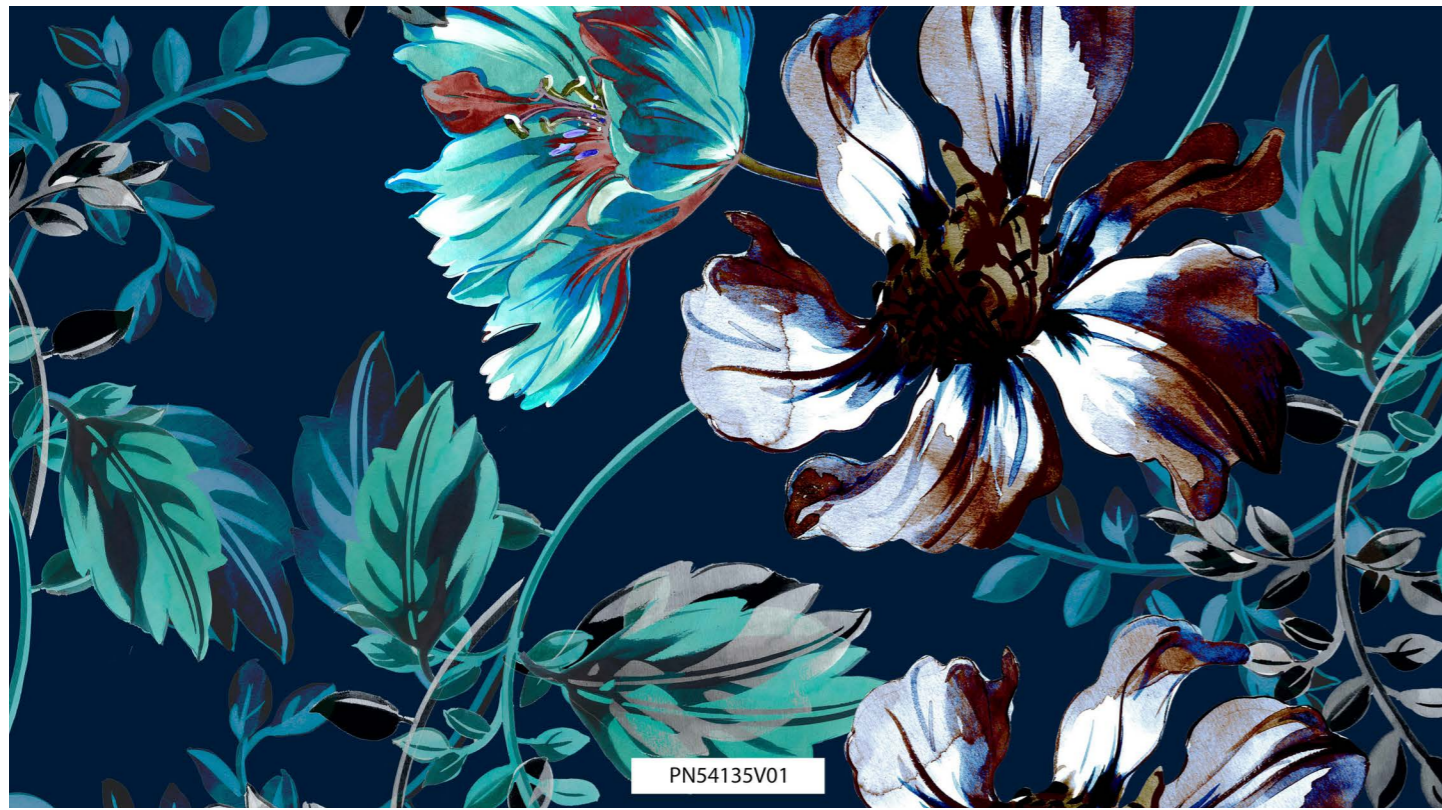
↓ FW · ETHNIC WOMAN^{V02}



↓ FW · ETHNIC WOMAN^{V03}



↓ FW · ETHNIC WOMAN^{V04}



↓ FW · COLLECTION PRIMALINEA



↓ FW · COLLECTION PRIMALINEA



↓ FW · FLORAL WOMAN^{V02}



↓ FW · FLORAL WOMAN^{V03}



↓ FW · FLORAL WOMAN^{V04}



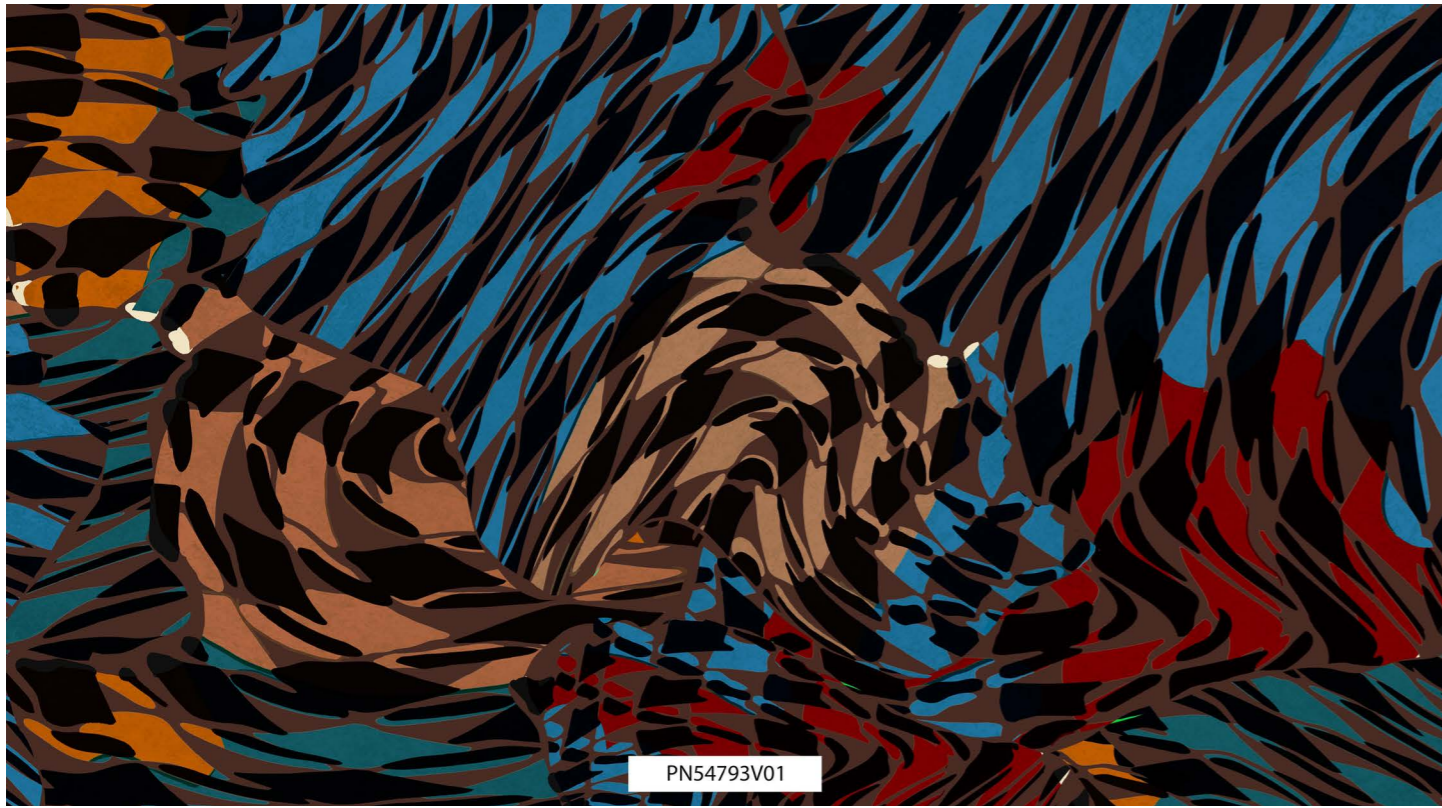
↓ FW · FLORAL WOMAN^{V02}



↓ FW · FLORAL WOMAN^{V03}



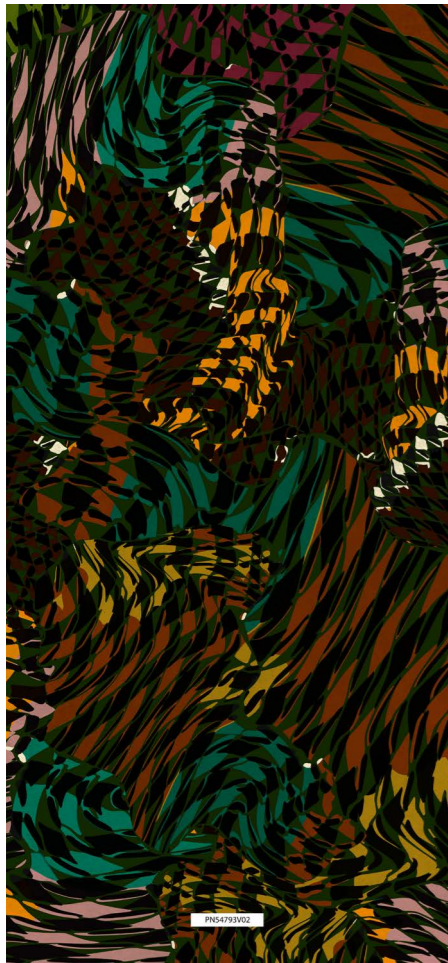
↓ FW · FLORAL WOMAN^{V04}



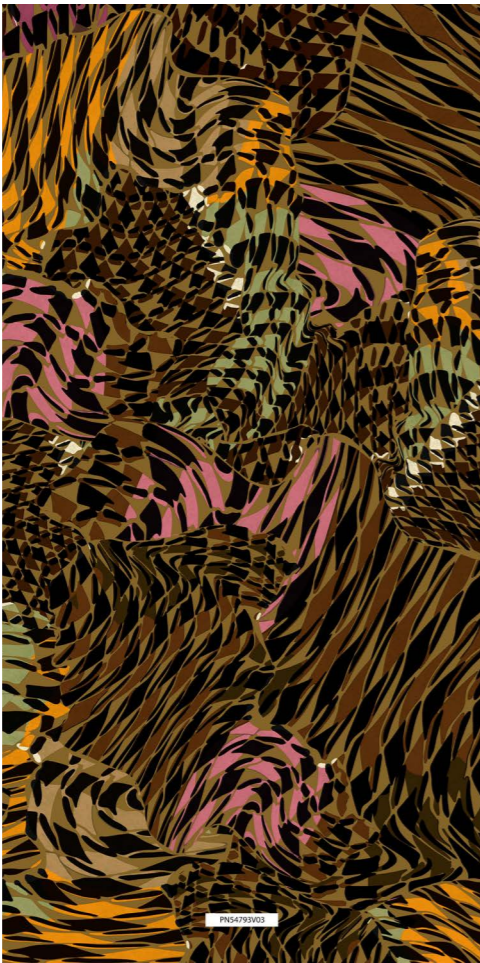
↓ FW · COLLECTION PRIMALINEA



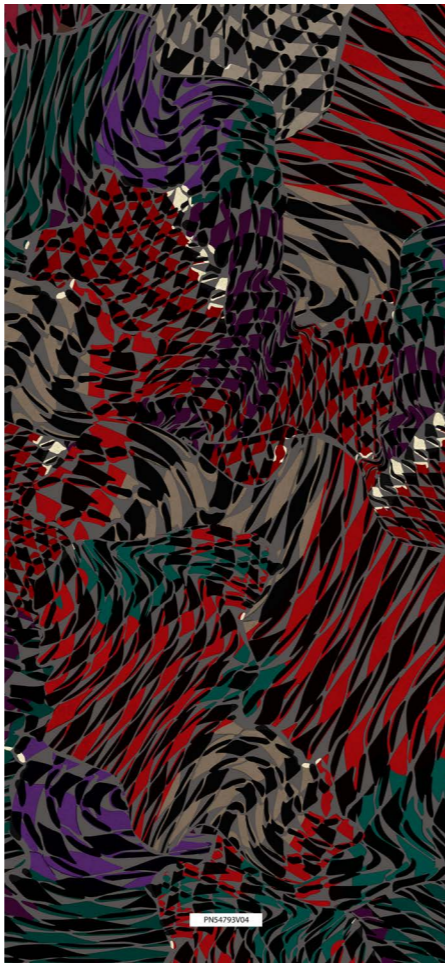
↓ FW · COLLECTION PRIMALINEA



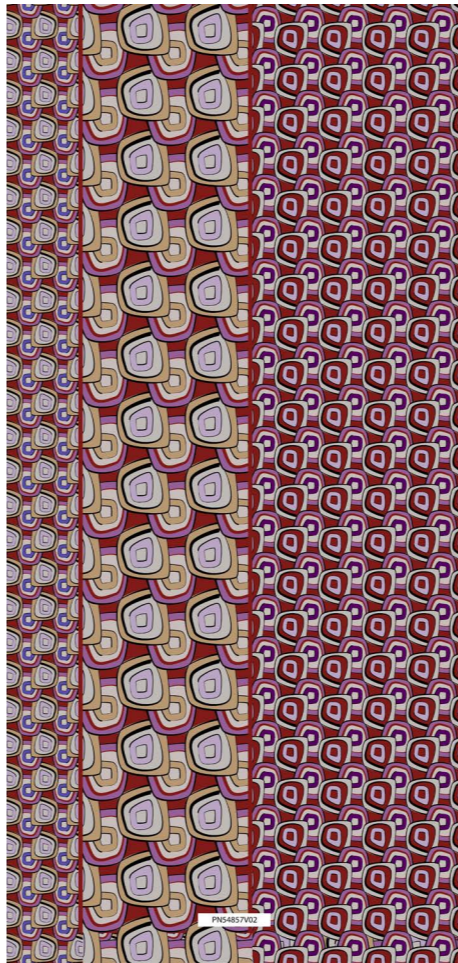
↓ FW · GEOMETRIC WOMAN^{V02}



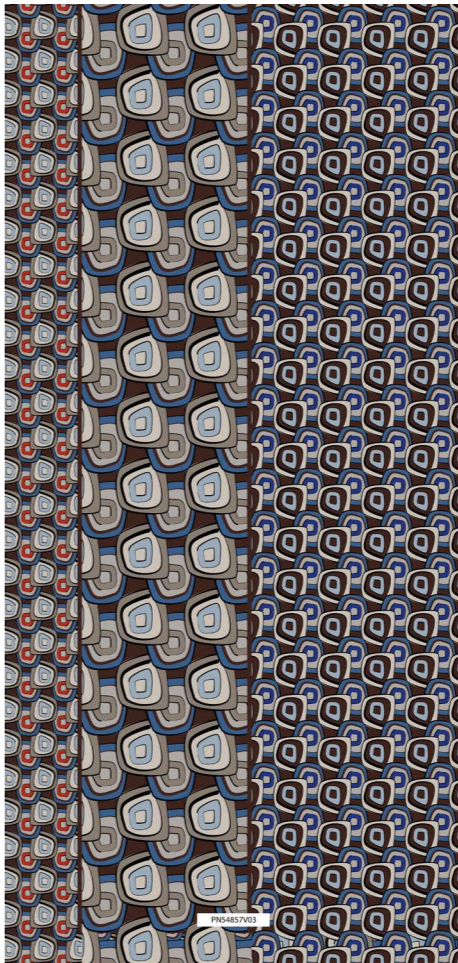
↓ FW · GEOMETRIC WOMAN^{V03}



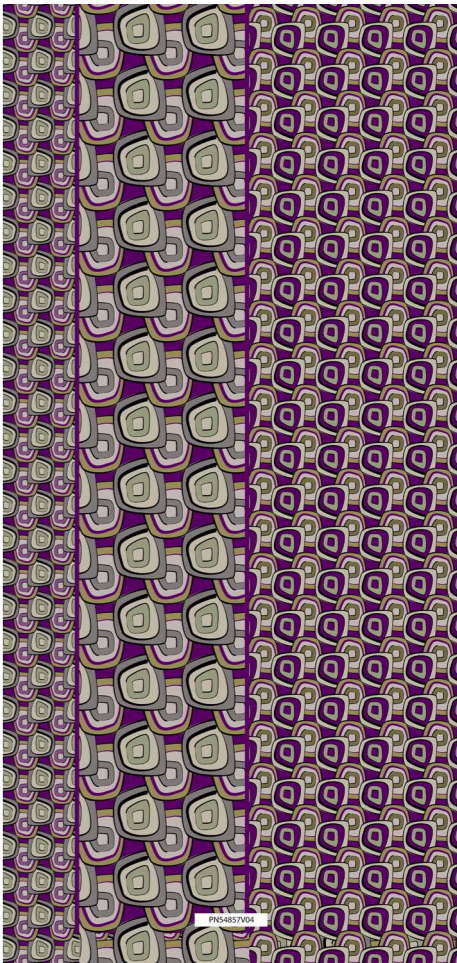
↓ FW · GEOMETRIC WOMAN^{V04}



↓ FW · GEOMETRIC WOMAN^{V02}



↓ FW · GEOMETRIC WOMAN^{V03}



↓ FW · GEOMETRIC WOMAN^{V04}

READY
TO WEAR
2022

WINTER
COLLECTION

FALL—WINTER (FW)

EUROPRINT · WOMAN
READY TO WEAR COLLECTION — FW22

FLOREAL



↓ FW · FLORAL
WOMAN



↓ FW · FLORAL
WOMAN



↓ FW · FLORAL
WOMAN



↓ FW · FLORAL
WOMAN



↓ FW · FLORAL
WOMAN



↓ FW · FLORAL
WOMAN



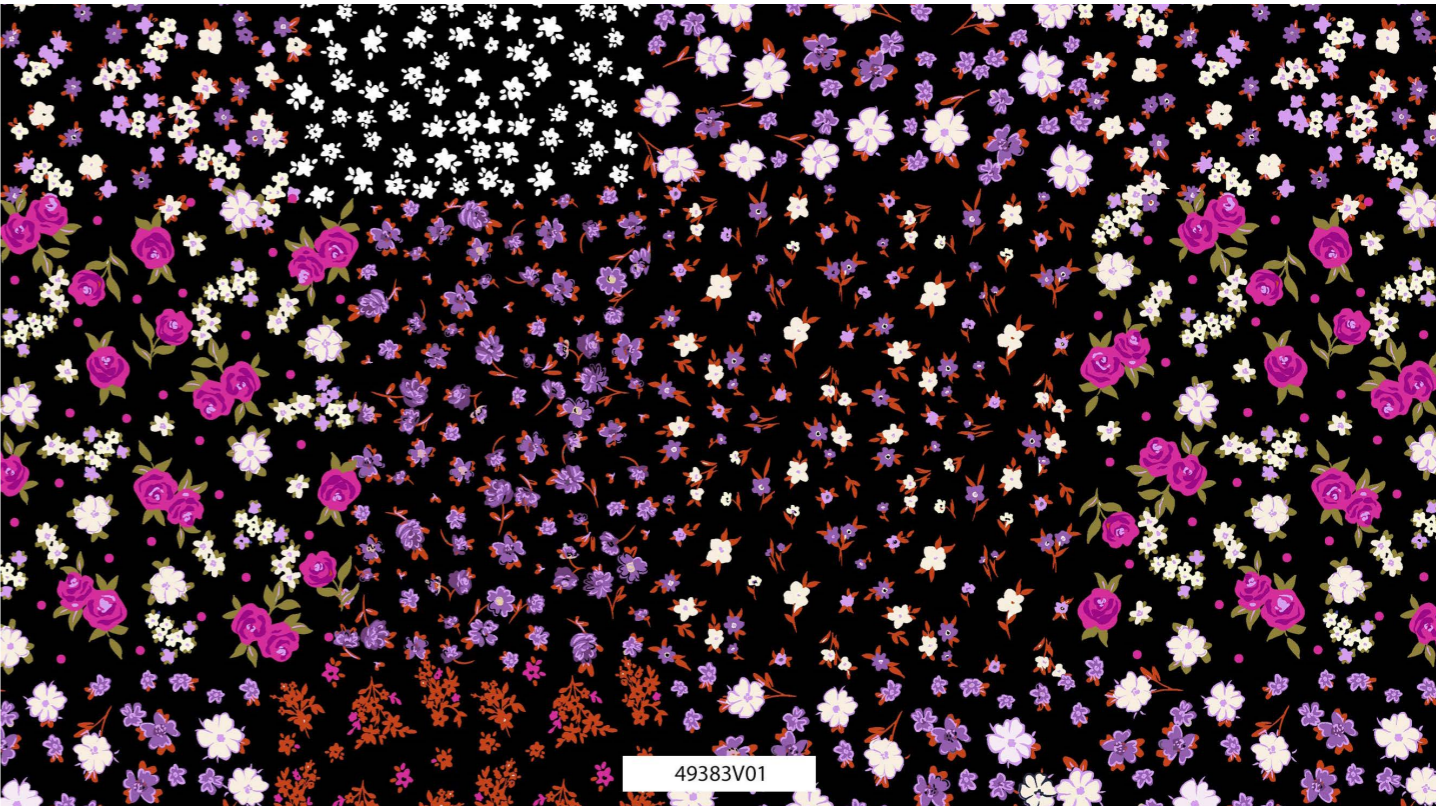
↓ FW · FLORAL
WOMAN



↓ FW · FLORAL
WOMAN



↓ FW · FLORAL^{V01} WOMAN



↓ FW · FLORAL^{V01} WOMAN



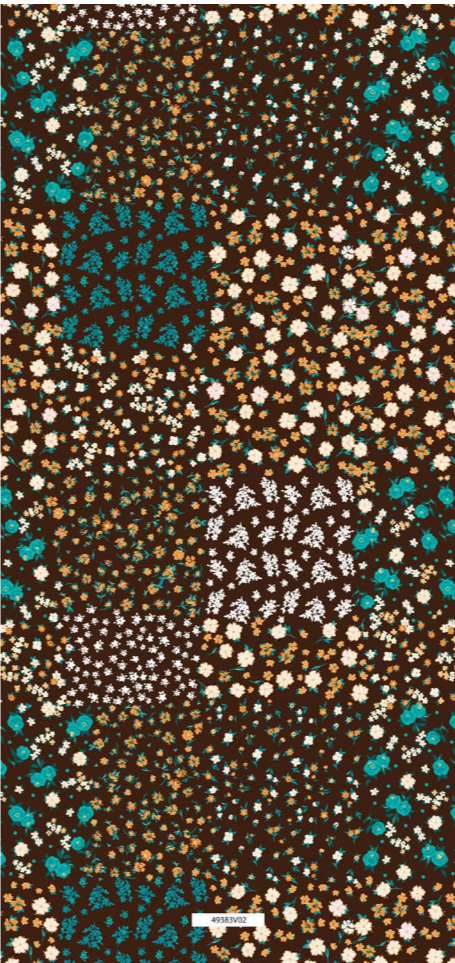
↓ FW · FLORAL^{V02} WOMAN



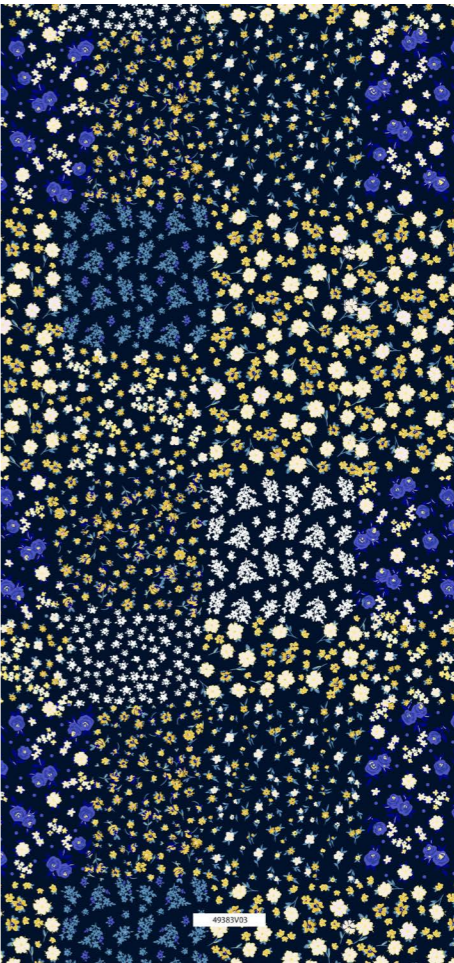
↓ FW · FLORAL^{V03} WOMAN



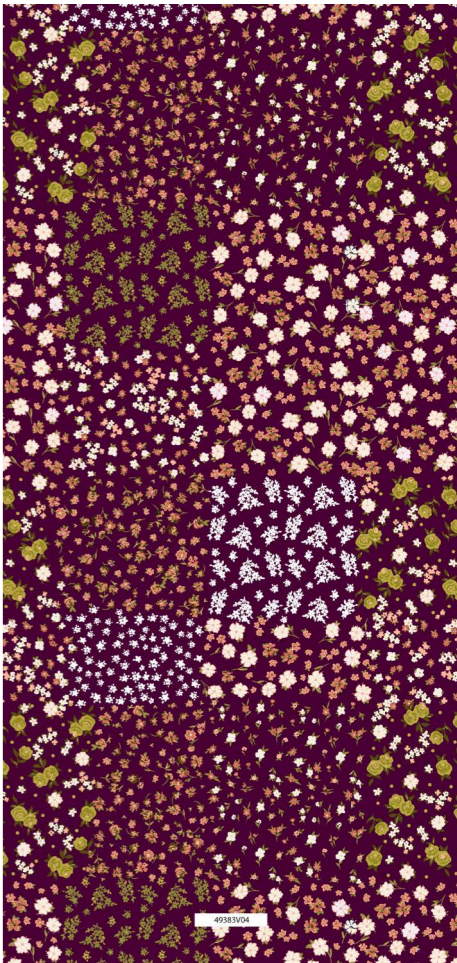
↓ FW · FLORAL^{V04} WOMAN



↓ FW · FLORAL^{V02} WOMAN



↓ FW · FLORAL^{V03} WOMAN

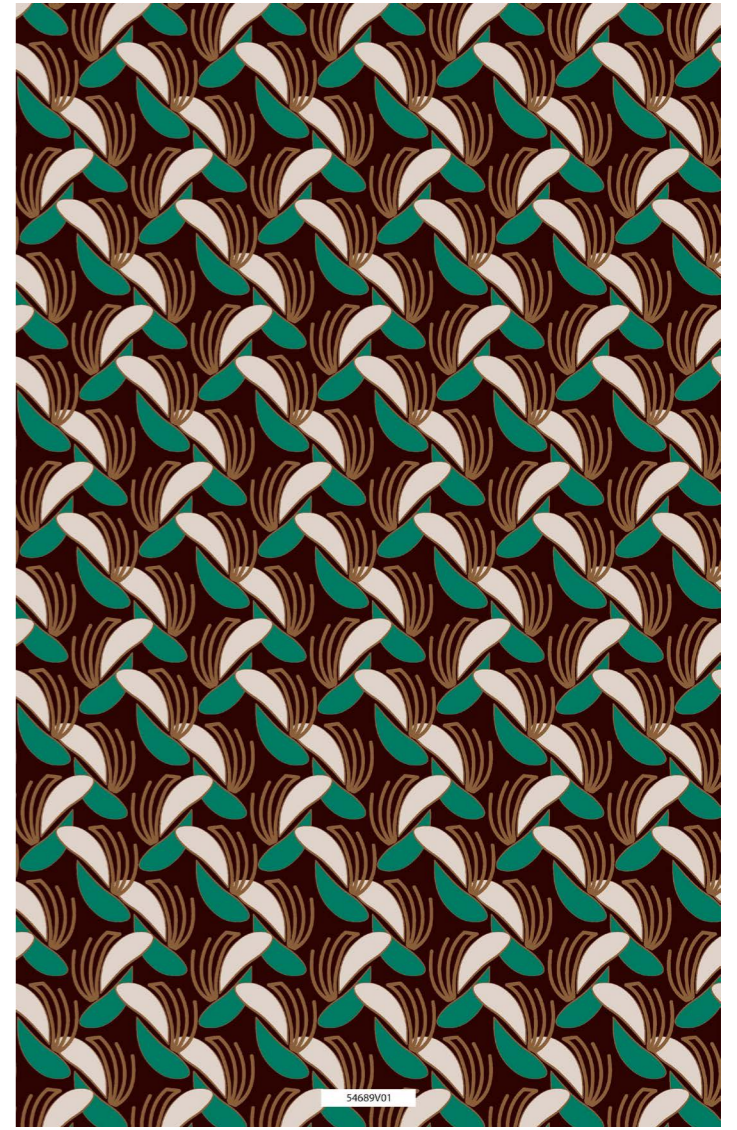
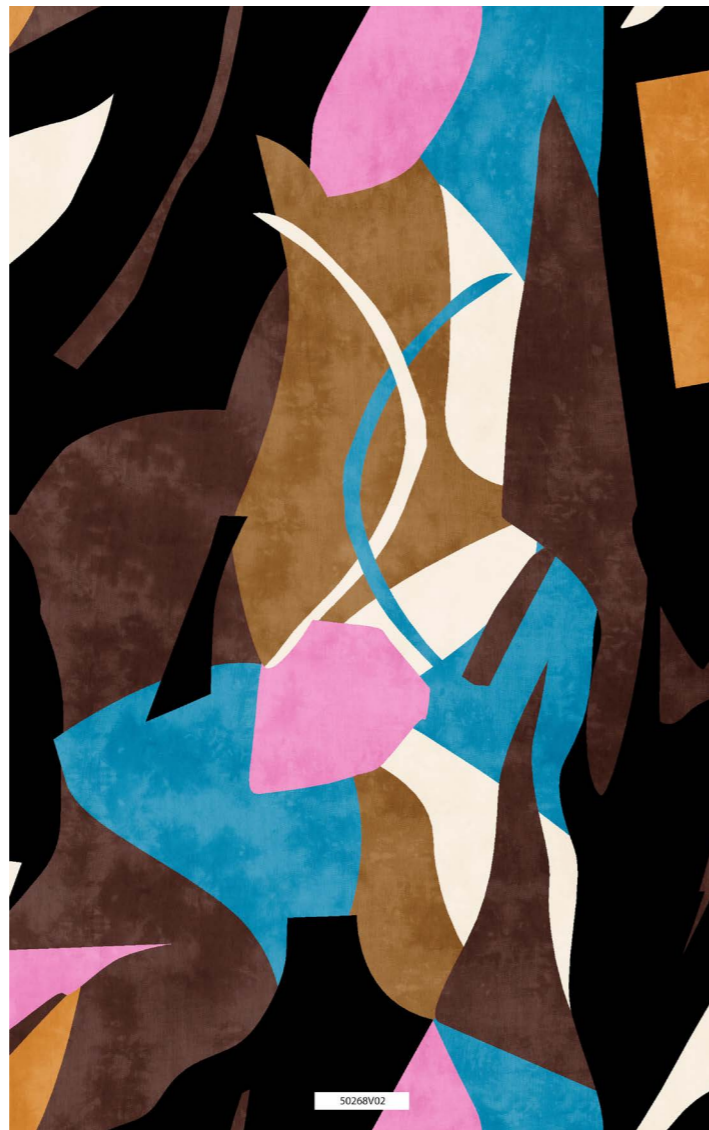
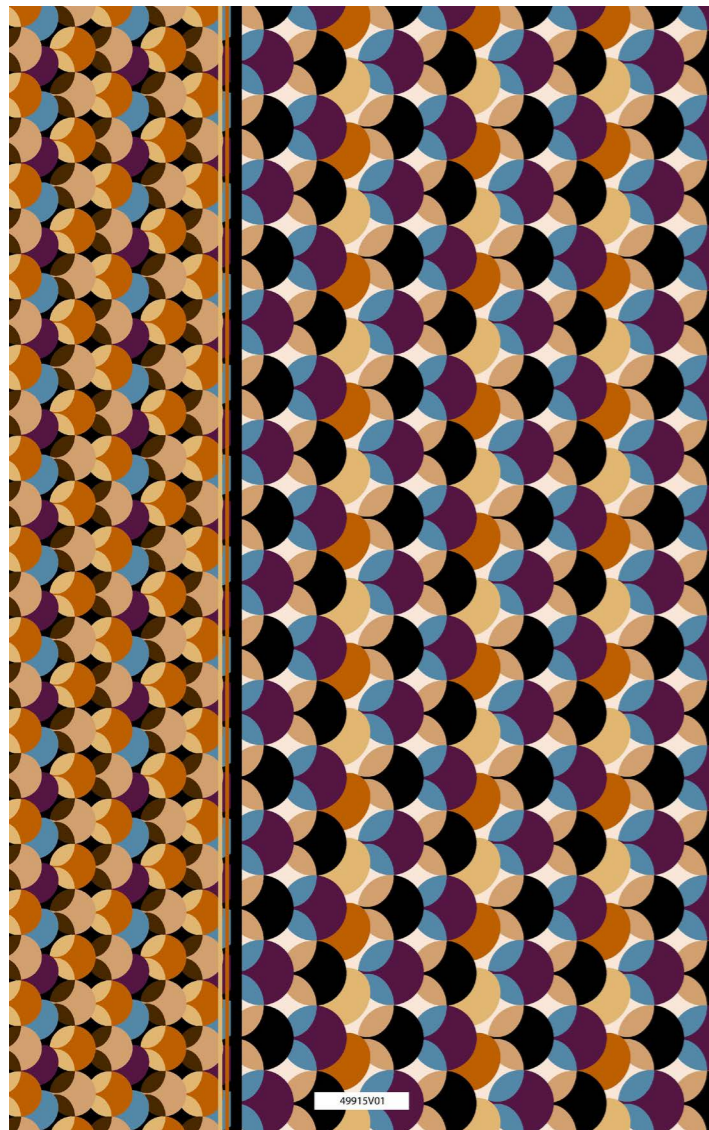


↓ FW · FLORAL^{V04} WOMAN

FALL—WINTER (FW)

EUROPRINT · WOMAN
READY TO WEAR COLLECTION — FW22

GEOMETRIC

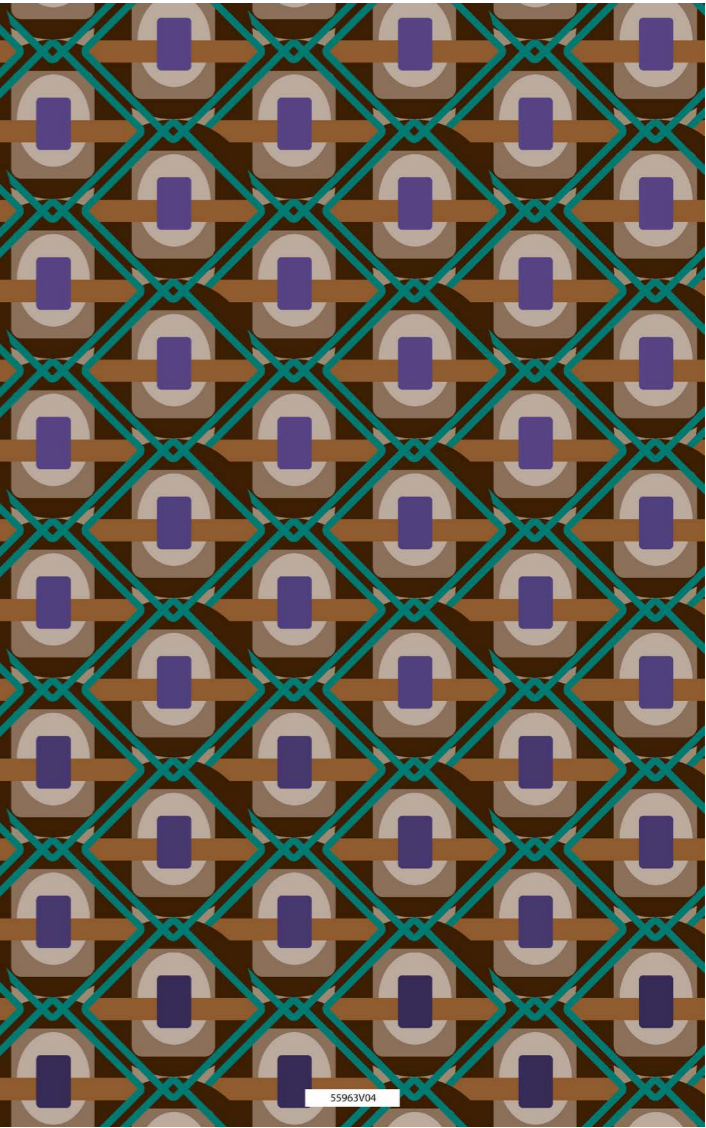
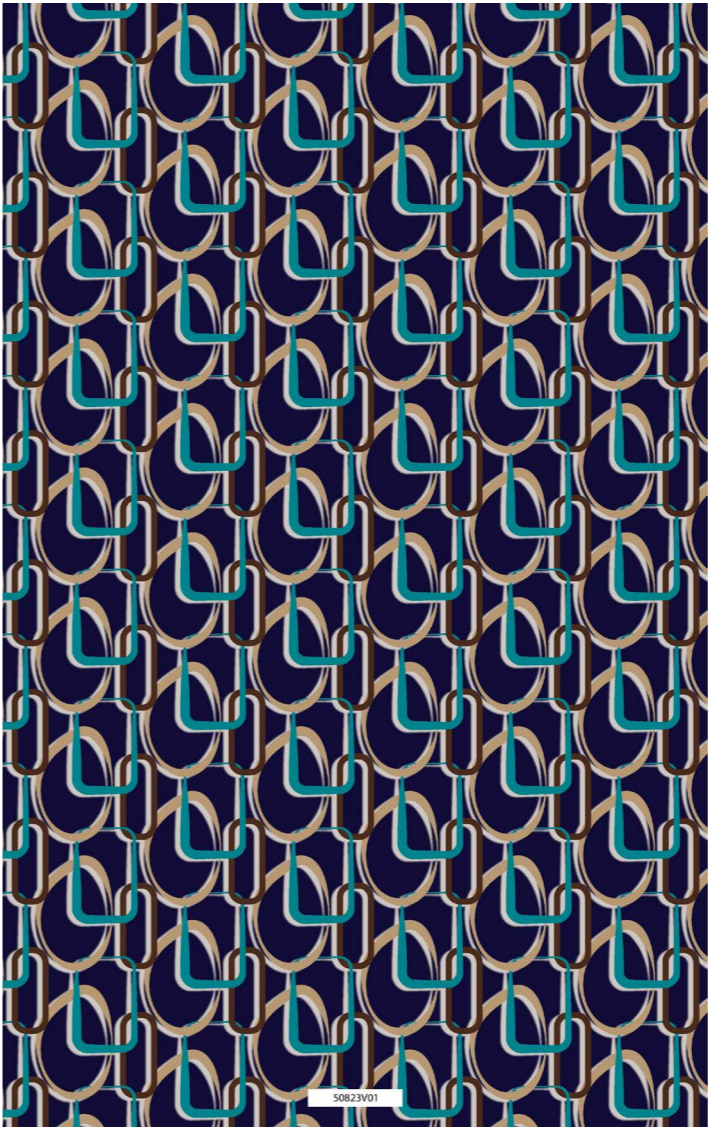
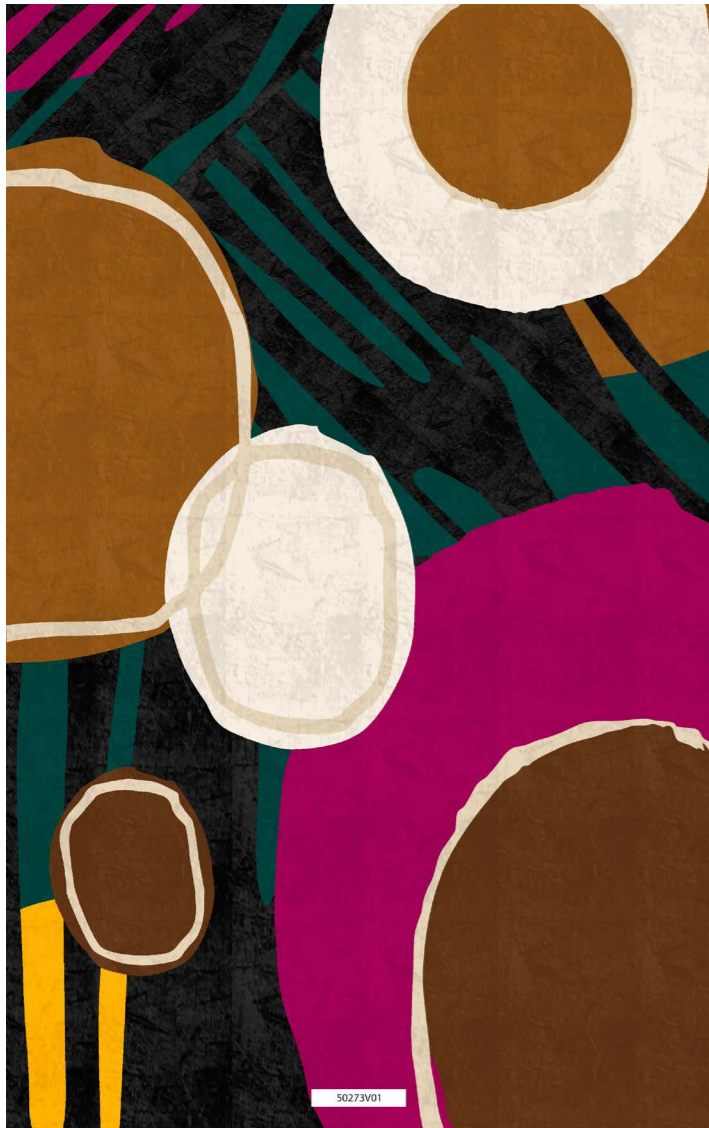


↓ FW · GEOMETRIC
WOMAN

↓ FW · GEOMETRIC
WOMAN

↓ FW · GEOMETRIC
WOMAN

↓ FW · GEOMETRIC
WOMAN

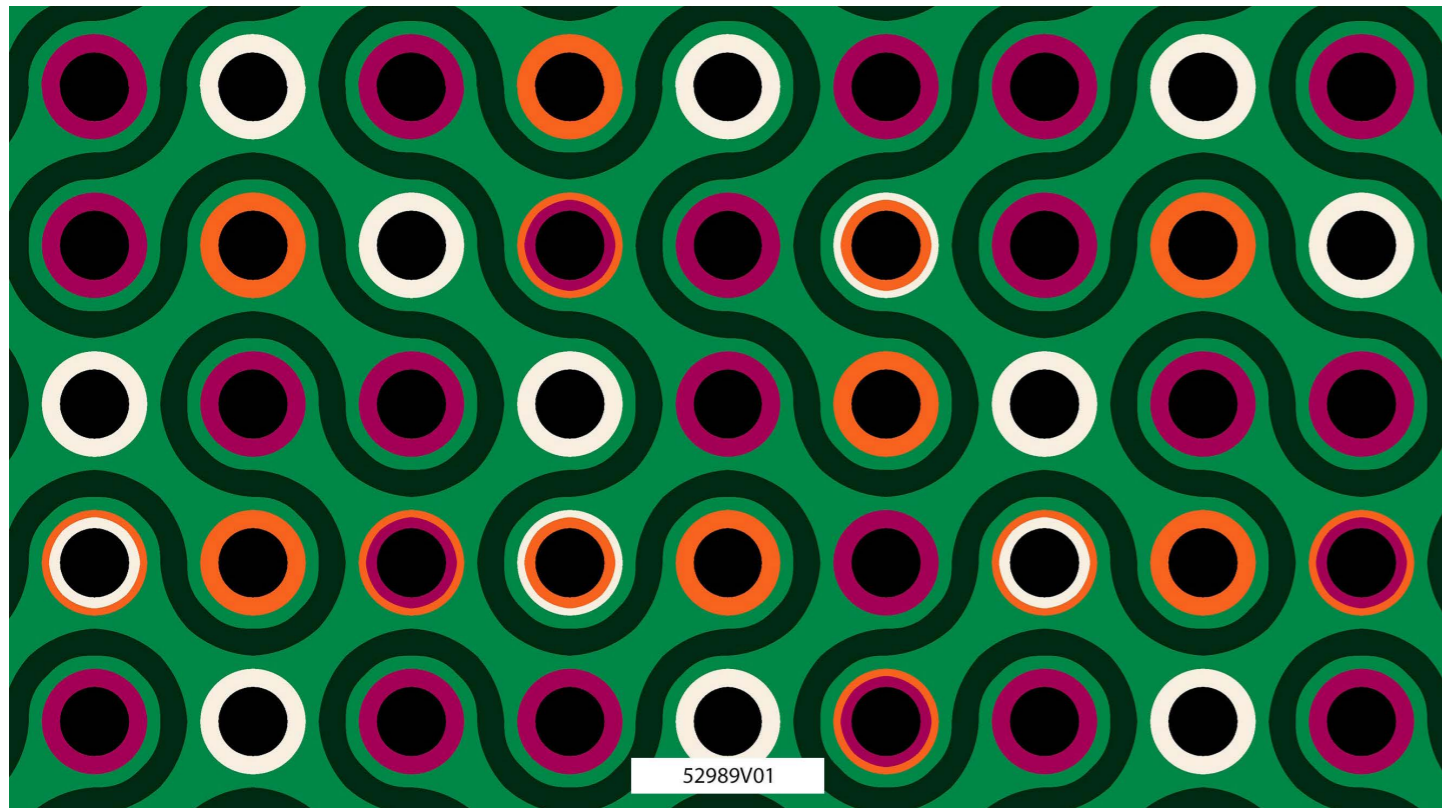


↓ FW · GEOMETRIC
WOMAN

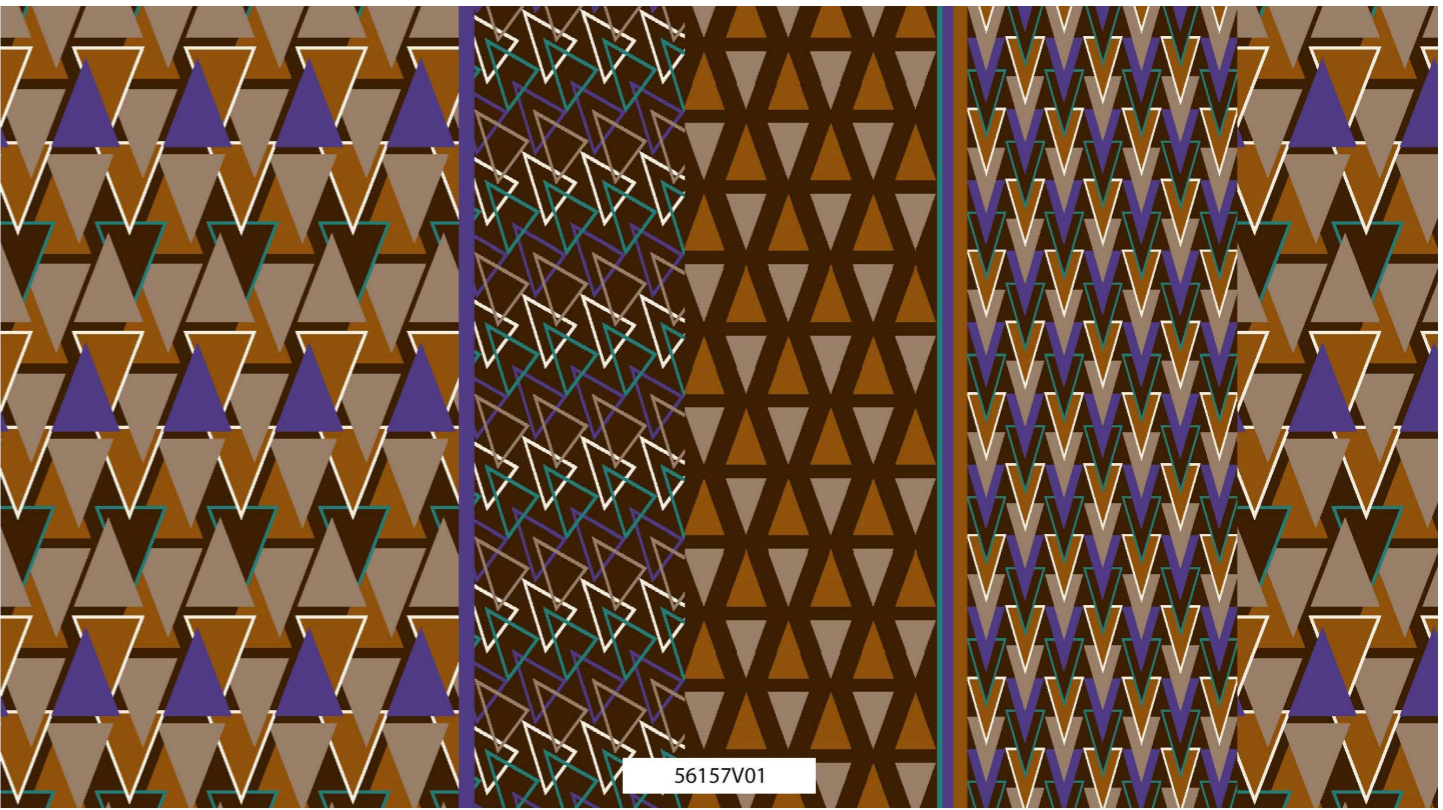
↓ FW · GEOMETRIC
WOMAN

↓ FW · GEOMETRIC
WOMAN

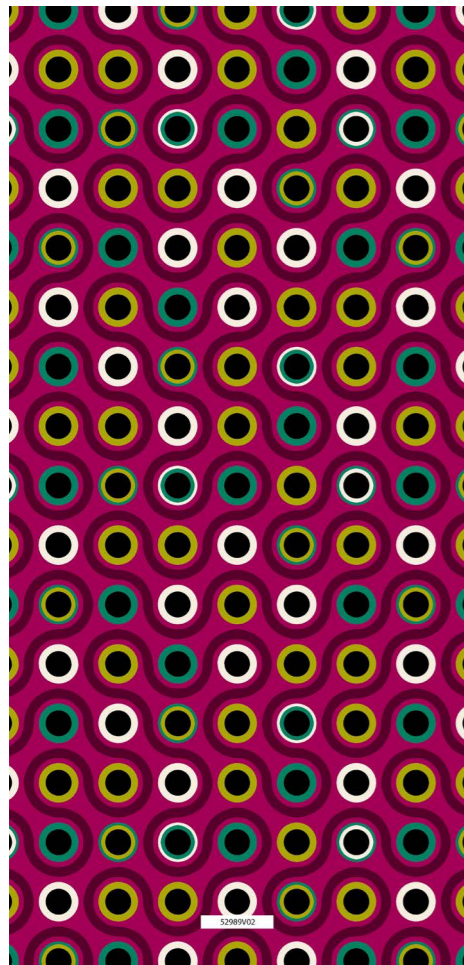
↓ FW · GEOMETRIC
WOMAN



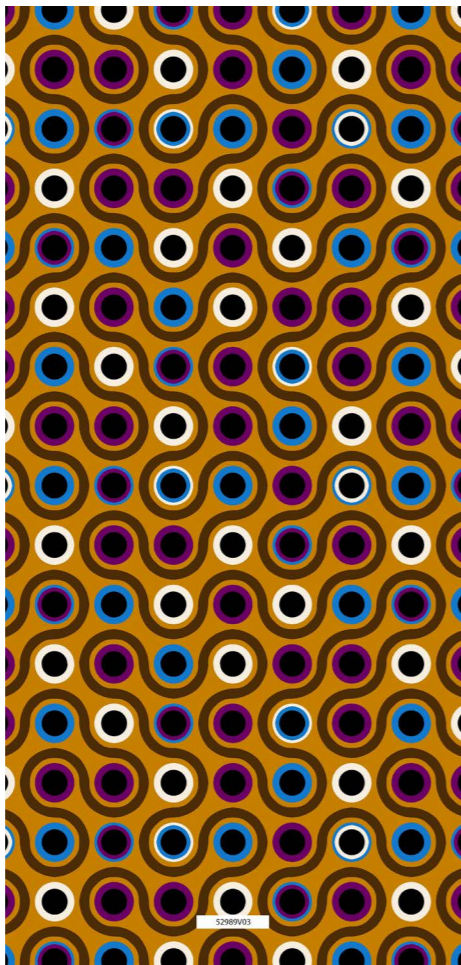
↓ FW · GEOMETRIC^{V01} WOMAN



↓ FW · GEOMETRIC^{V01} WOMAN



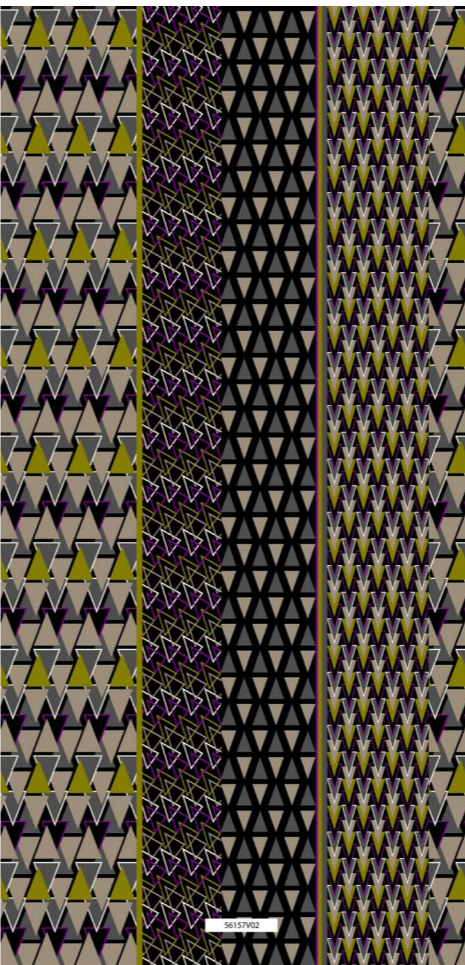
↓ FW · GEOMETRIC^{V02} WOMAN



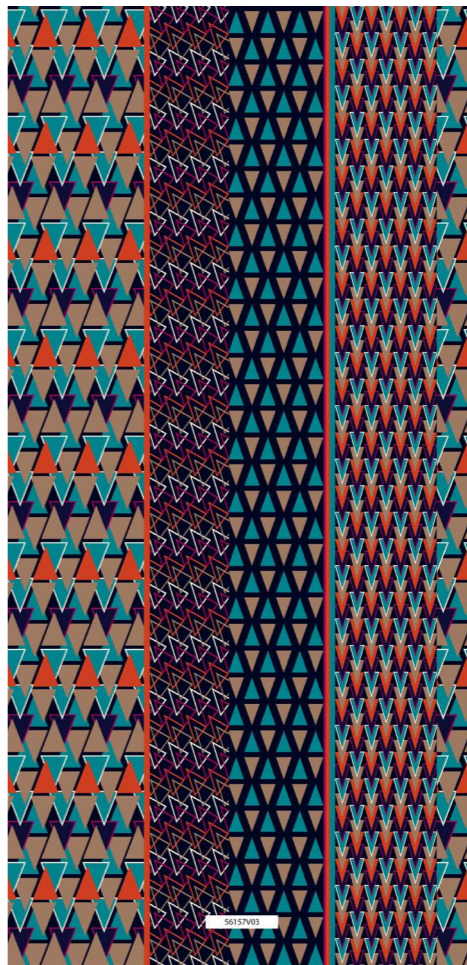
↓ FW · GEOMETRIC^{V03} WOMAN



↓ FW · GEOMETRIC^{V04} WOMAN



↓ FW · GEOMETRIC^{V02} WOMAN



↓ FW · GEOMETRIC^{V03} WOMAN



↓ FW · GEOMETRIC^{V04} WOMAN

FALL—WINTER (FW)

EUROPRINT · WOMAN
READY TO WEAR COLLECTION — FW22

ETHNIC



↓ FW · ETHNIC
WOMAN



↓ FW · ETHNIC
WOMAN



↓ FW · ETHNIC
WOMAN



↓ FW · ETHNIC
WOMAN



↓ FW · ETHNIC
WOMAN

↓ FW · ETHNIC
WOMAN

↓ FW · ETHNIC
WOMAN

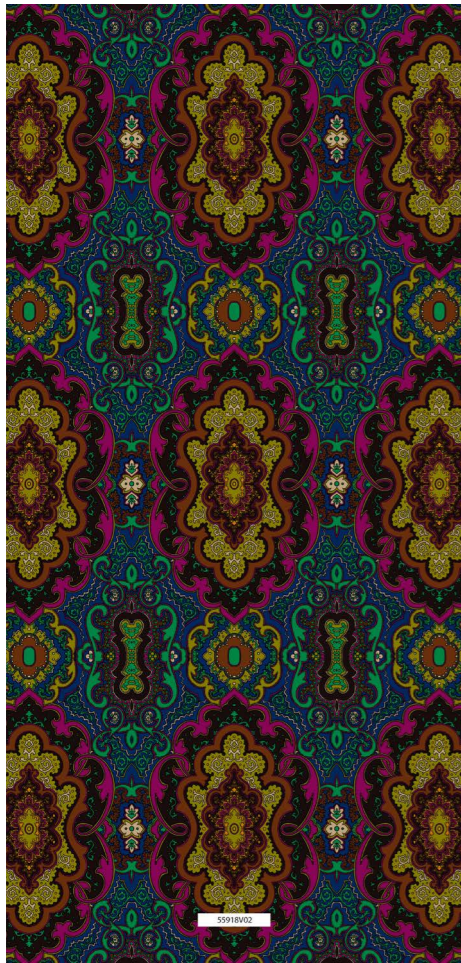
↓ FW · ETHNIC
WOMAN



↓ FW · ETHNIC^{V01} WOMAN



↓ FW · ETHNIC^{V01} WOMAN



↓ FW · ETHNIC^{V02} WOMAN



↓ FW · ETHNIC^{V03} WOMAN



↓ FW · ETHNIC^{V04} WOMAN



↓ FW · ETHNIC^{V02} WOMAN



↓ FW · ETHNIC^{V03} WOMAN



↓ FW · ETHNIC^{V04} WOMAN

READY
TO WEAR
2022

SUMMER
COLLECTION

SPRING—SUMMER (SS)

EUROPRINT · WOMAN
READY TO WEAR COLLECTION — SS22

TROPICAL



↓ SS · TROPICAL
WOMAN



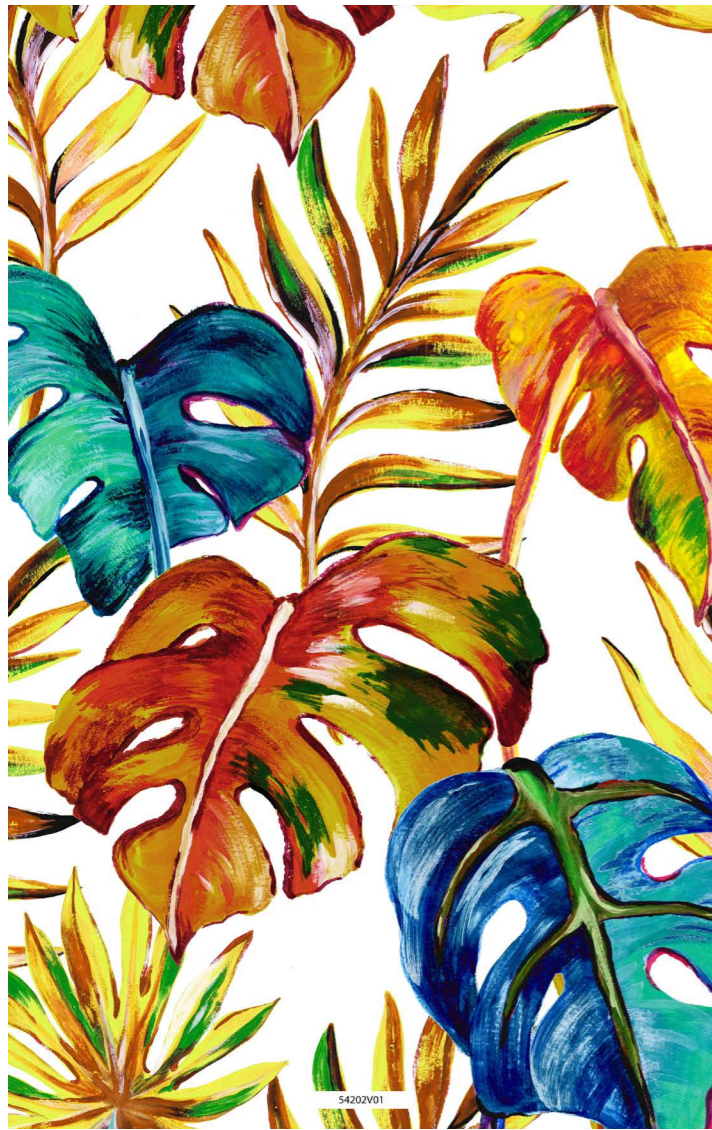
↓ SS · TROPICAL
WOMAN



↓ SS · TROPICAL
WOMAN



↓ SS · TROPICAL
WOMAN



↓ SS · TROPICAL
WOMAN

↓ SS · TROPICAL
WOMAN

↓ SS · TROPICAL
WOMAN

↓ SS · TROPICAL
WOMAN



54207V01



SS · TROPICAL^{V01} WOMAN



54202V01



SS · TROPICAL^{V01} WOMAN



54207V02



SS · TROPICAL^{V02}
WOMAN



54207V03



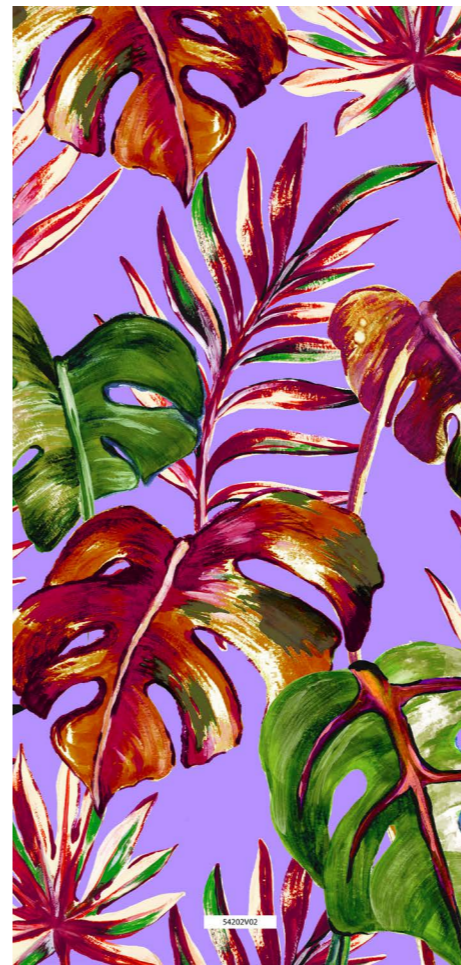
SS · TROPICAL^{V03}
WOMAN



54207V04



SS · TROPICAL^{V04}
WOMAN



54202V02



SS · TROPICAL^{V02}
WOMAN



54202V03



SS · TROPICAL^{V03}
WOMAN



54202V04



SS · TROPICAL^{V04}
WOMAN

SPRING—SUMMER (SS)

EUROPRINT · WOMAN
READY TO WEAR COLLECTION — SS22

ETHNIC



↓ SS · ETHNIC
WOMAN



↓ SS · ETHNIC
WOMAN



↓ SS · ETHNIC
WOMAN



↓ SS · ETHNIC
WOMAN



↓ SS · ETHNIC
WOMAN



↓ SS · ETHNIC
WOMAN



↓ SS · ETHNIC
WOMAN



↓ SS · ETHNIC
WOMAN



51934V01



SS · ETHNIC^{V01} WOMAN



54148V01



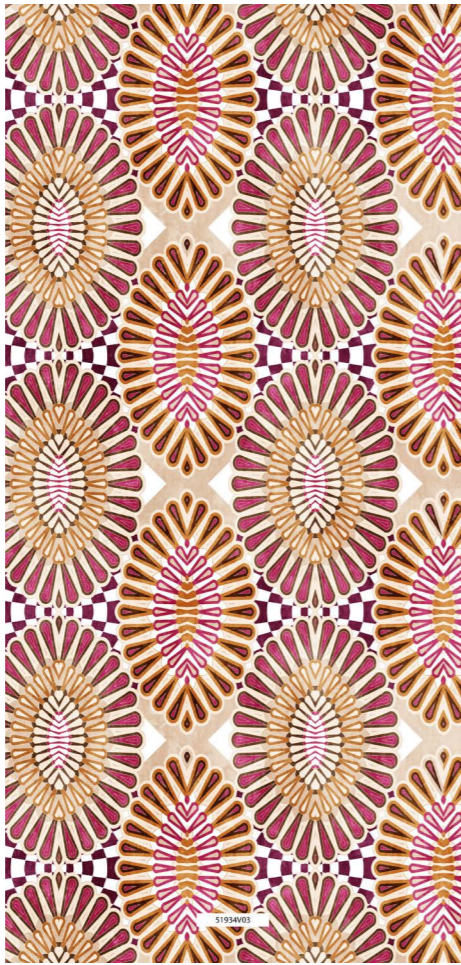
SS · ETHNIC^{V01} WOMAN



51934V02



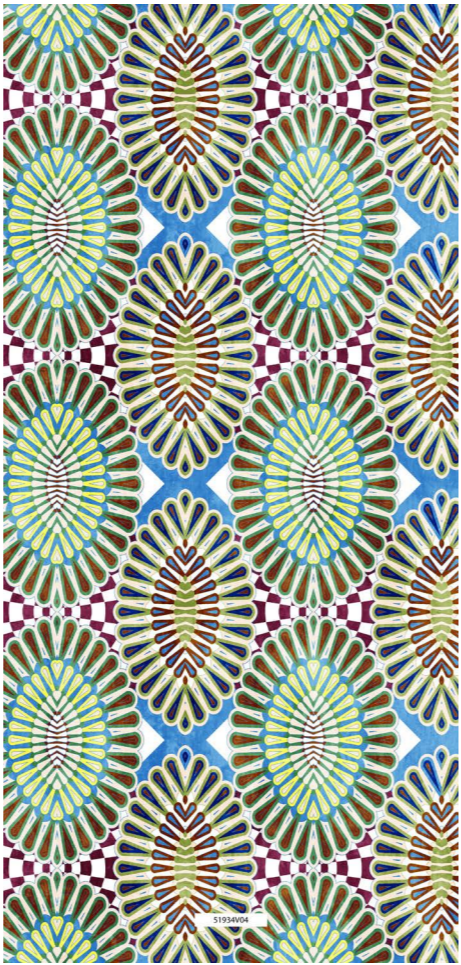
SS · ETHNIC^{V02} WOMAN



51934V03



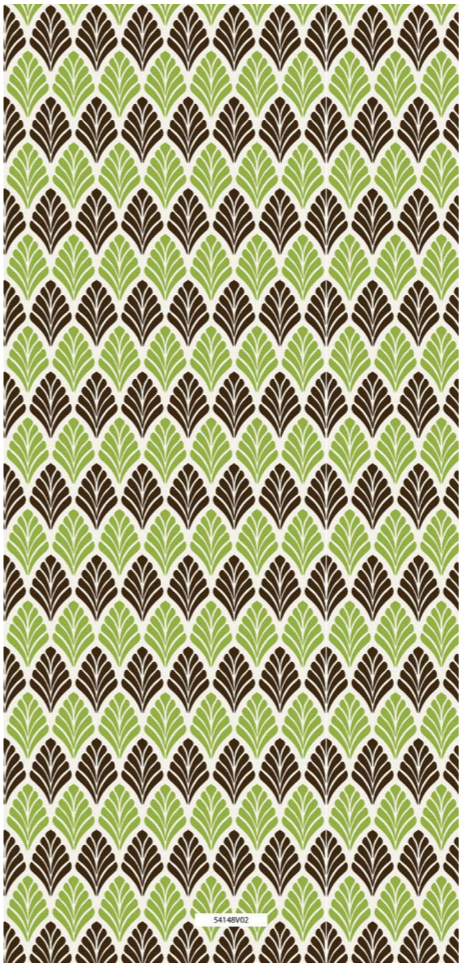
SS · ETHNIC^{V03} WOMAN



51934V04



SS · ETHNIC^{V04} WOMAN



54148V02



SS · ETHNIC^{V02} WOMAN



54148V03



SS · ETHNIC^{V03} WOMAN



54148V04



SS · ETHNIC^{V04} WOMAN

SPRING—SUMMER (SS)

EUROPRINT · WOMAN
READY TO WEAR COLLECTION — SS22

ANIMALIER



↓ SS · ANIMALIER
WOMAN

↓ SS · ANIMALIER
WOMAN

↓ SS · ANIMALIER
WOMAN

↓ SS · ANIMALIER
WOMAN



↓ SS · ANIMALIER
WOMAN

↓ SS · ANIMALIER
WOMAN

↓ SS · ANIMALIER
WOMAN

↓ SS · ANIMALIER
WOMAN



↓ SS · ANIMALIER^{V01} WOMAN



↓ SS · ANIMALIER^{V01} WOMAN



↓ SS · ANIMALIER^{V02} WOMAN



↓ SS · ANIMALIER^{V03} WOMAN



↓ SS · ANIMALIER^{V04} WOMAN



↓ SS · ANIMALIER^{V02} WOMAN



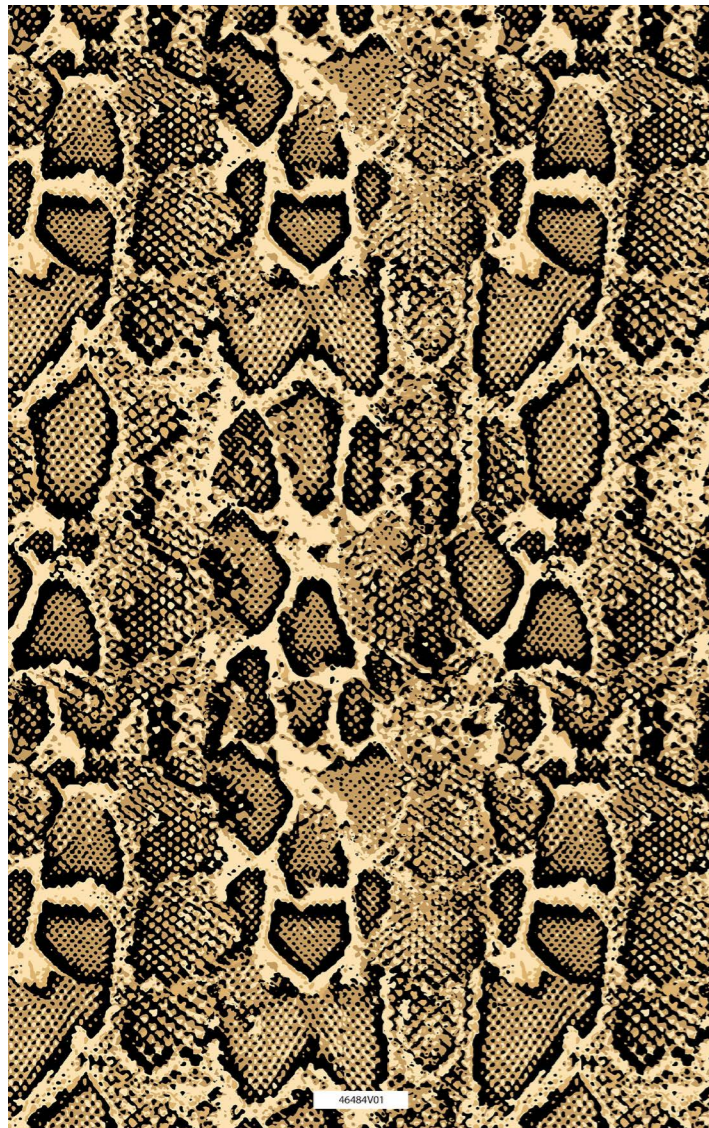
↓ SS · ANIMALIER^{V03} WOMAN



↓ SS · ANIMALIER^{V04} WOMAN

MAN

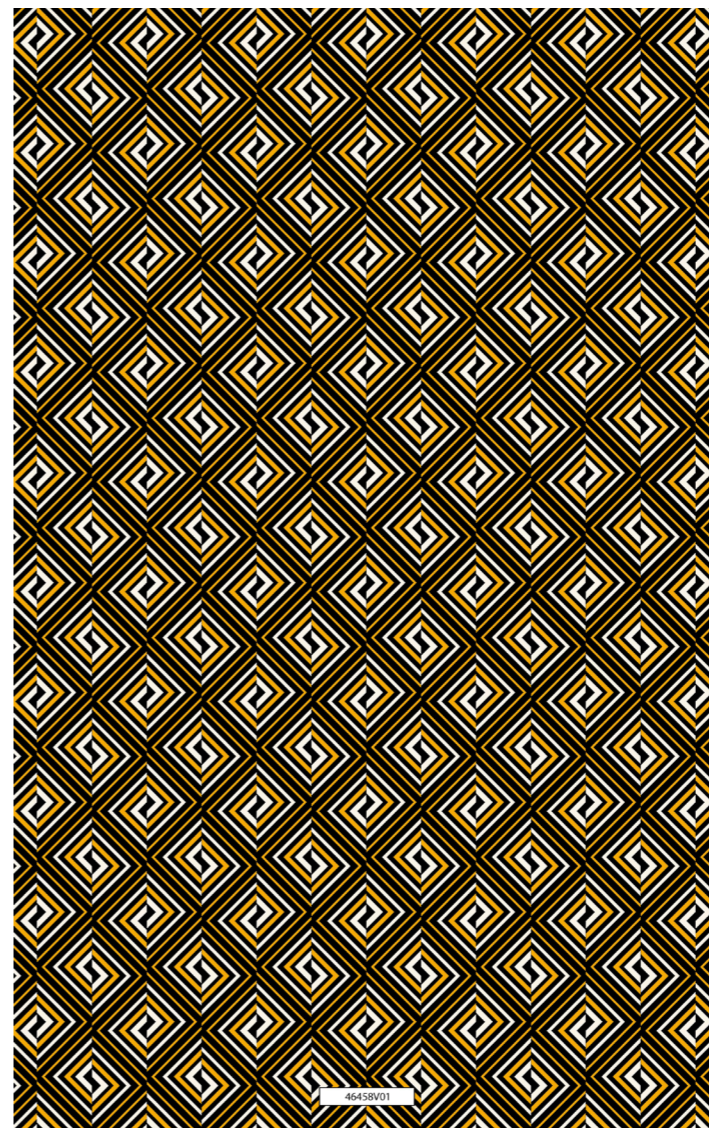
CAPSULE FW



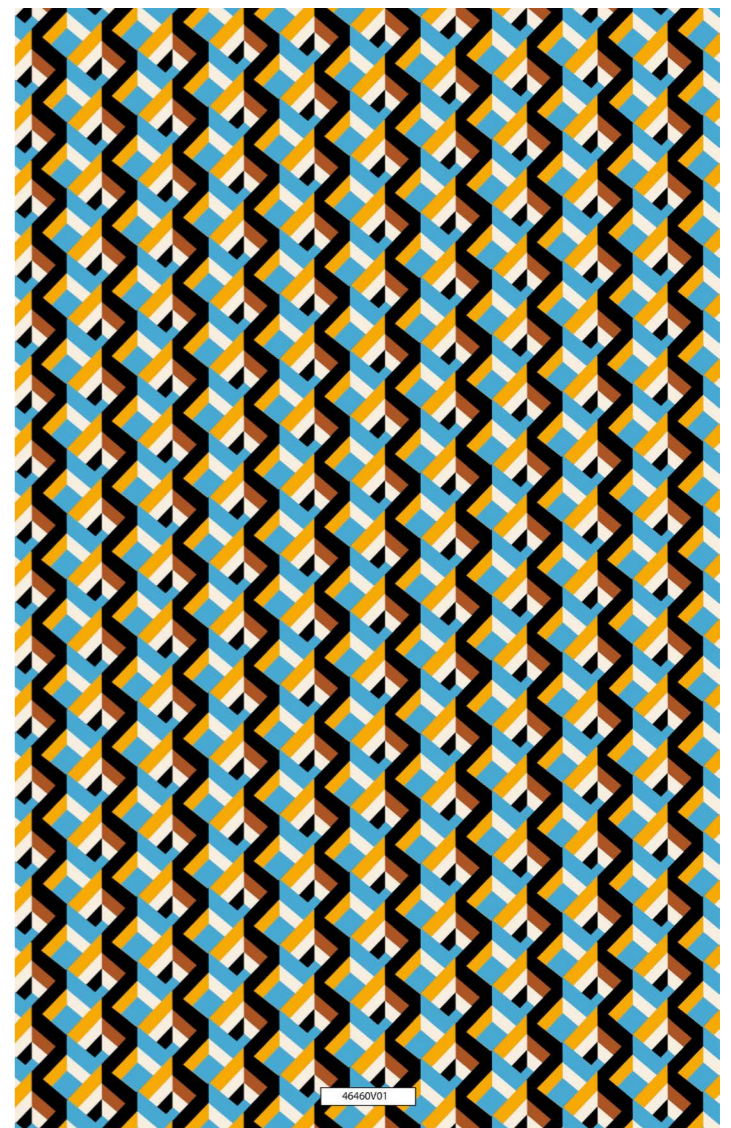
↓ AW · ANIMALIER
MAN



↓ AW · ANIMALIER
MAN



↓ AW · GEOMETRIC
MAN



↓ AW · GEOMETRIC
MAN



↓ AW · ETHNIC
MAN



↓ AW · ETHNIC
MAN



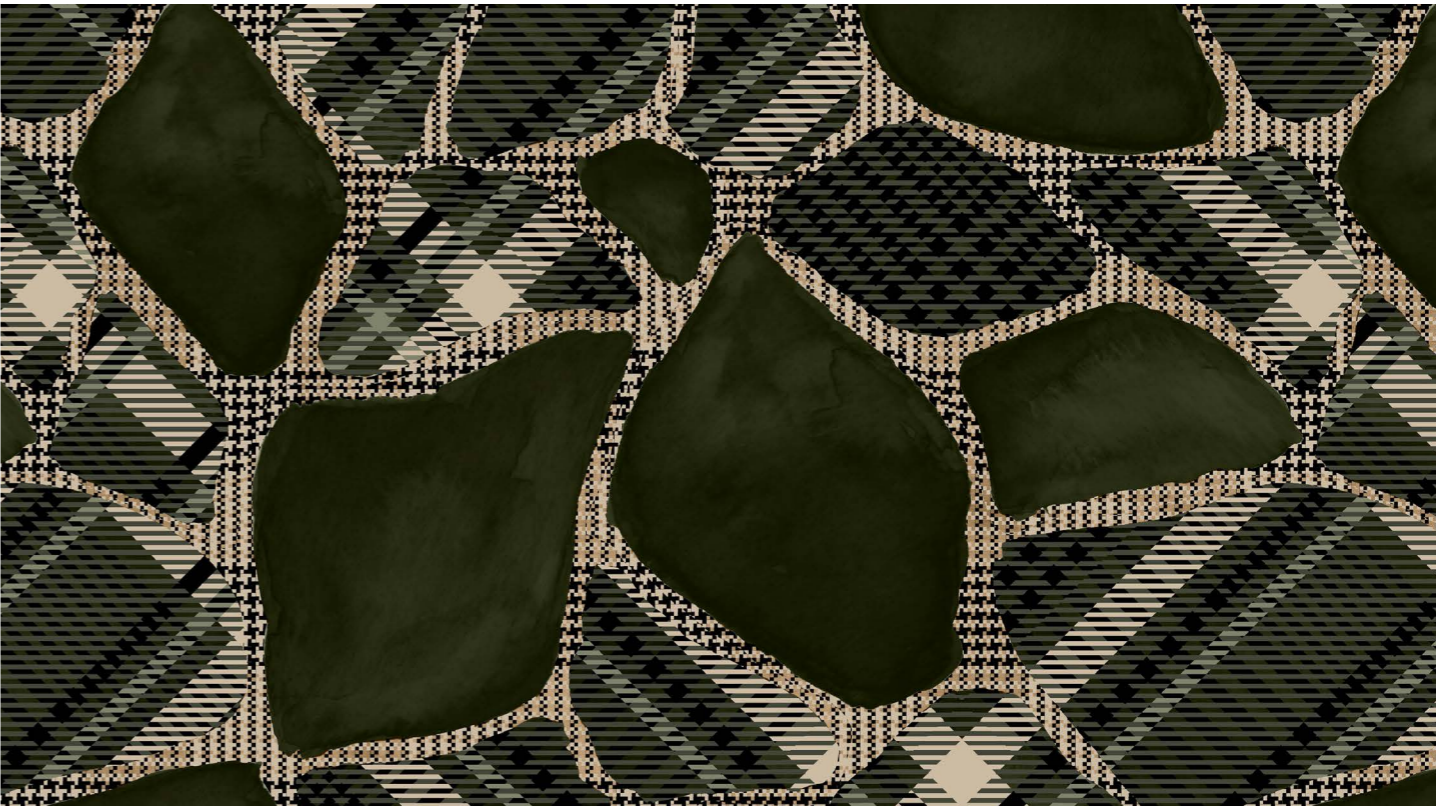
↓ AW · CONVERSATIONAL
MAN



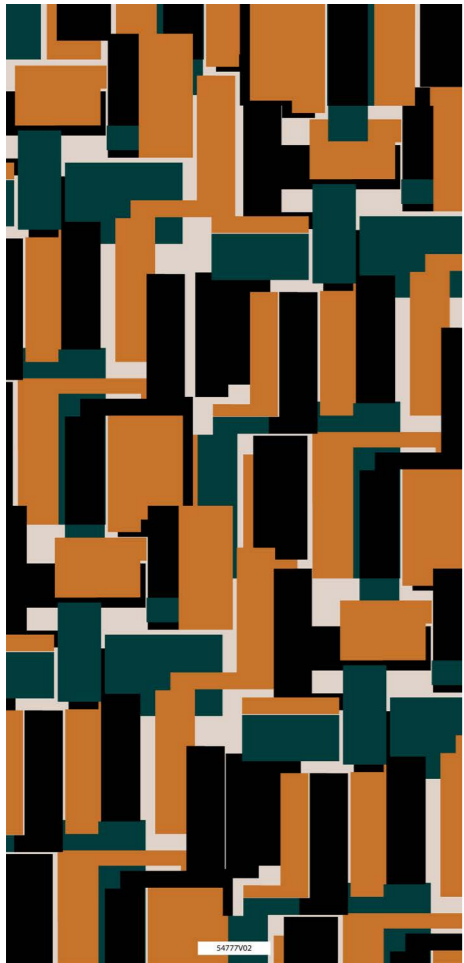
↓ AW · CONVERSATIONAL
MAN



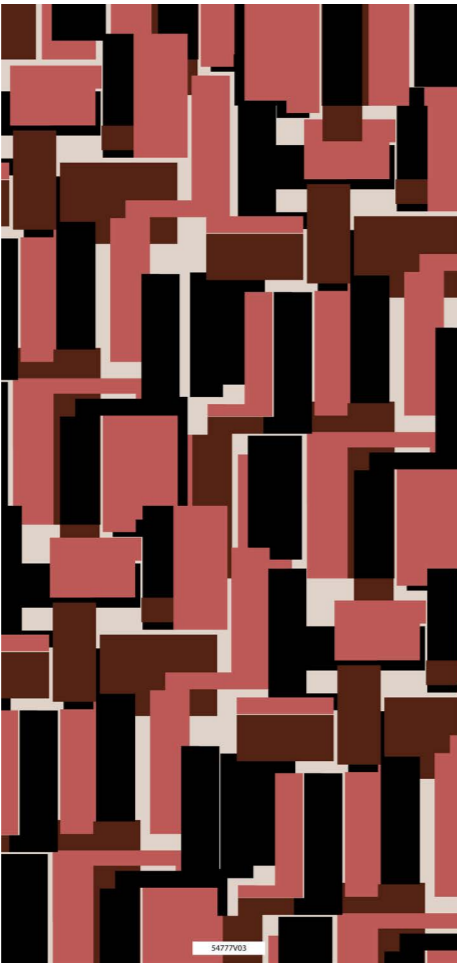
↓ AW · GEOMETRIC MAN ^{V01}



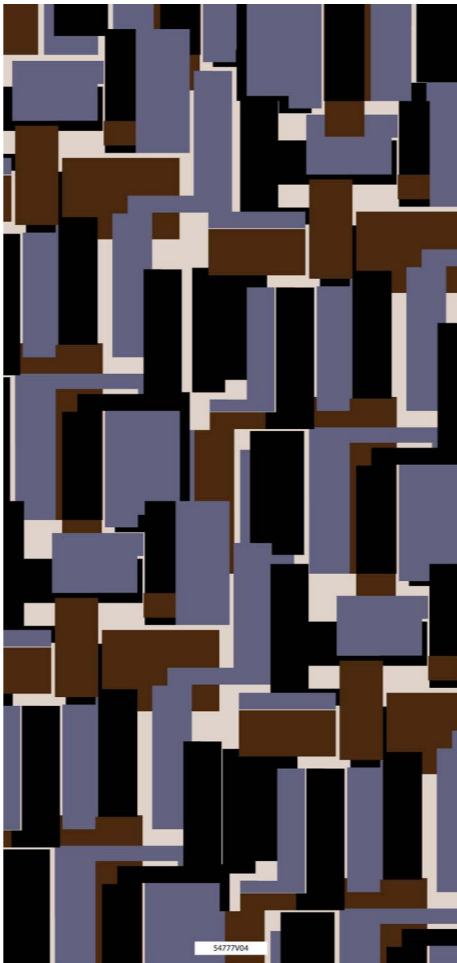
↓ AW · ANIMALIER MAN ^{V01}



↓ AW · GEOMETRIC MAN ^{V02}



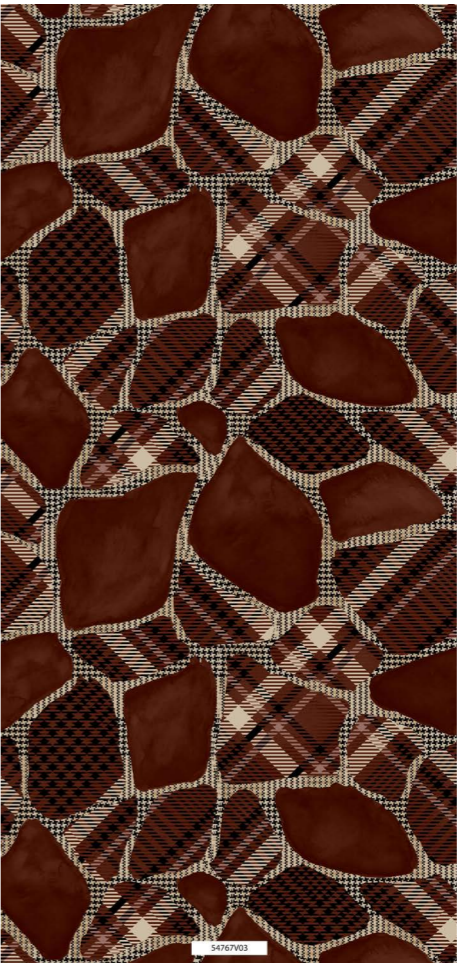
↓ AW · GEOMETRIC MAN ^{V03}



↓ AW · GEOMETRIC MAN ^{V04}



↓ AW · ANIMALIER MAN ^{V02}



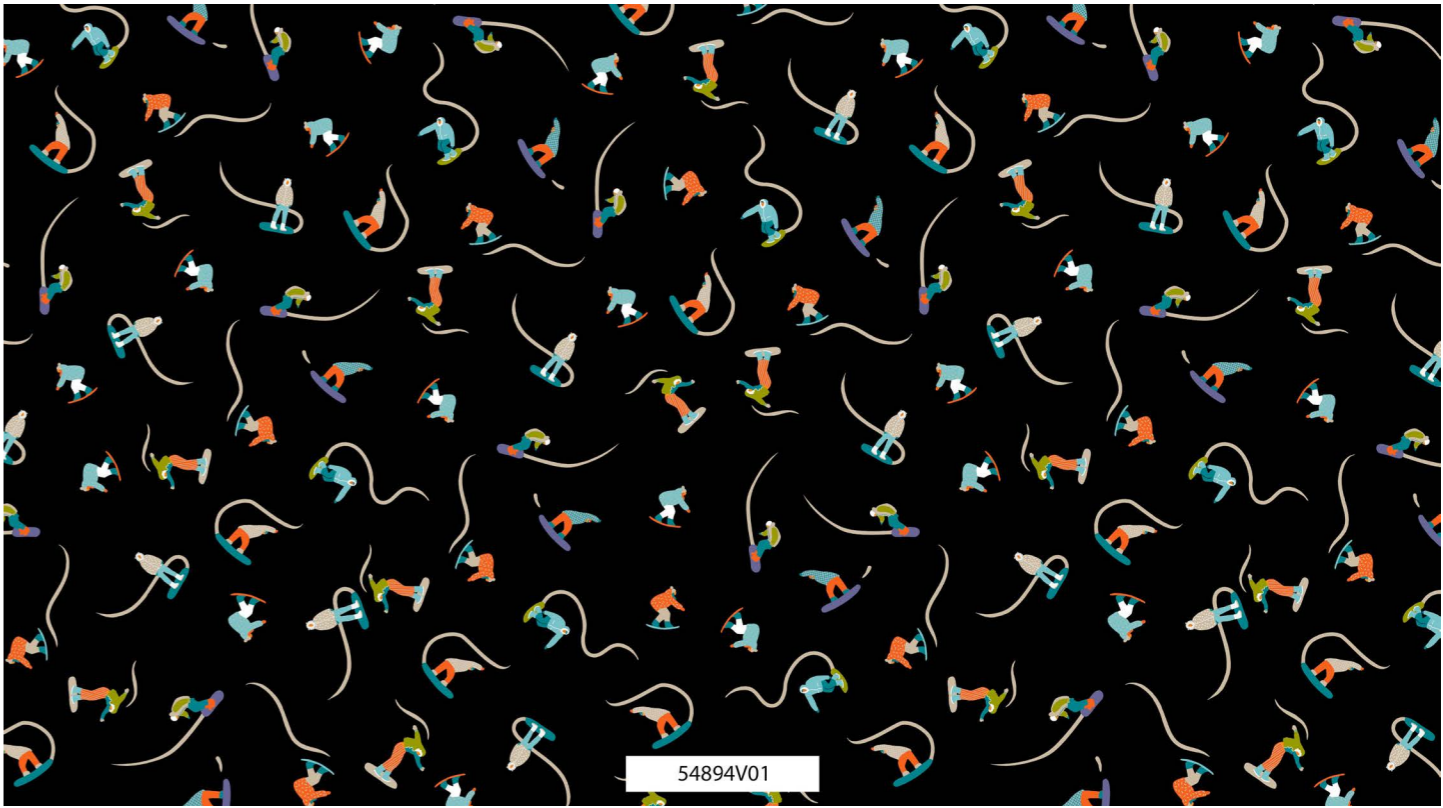
↓ AW · ANIMALIER MAN ^{V03}



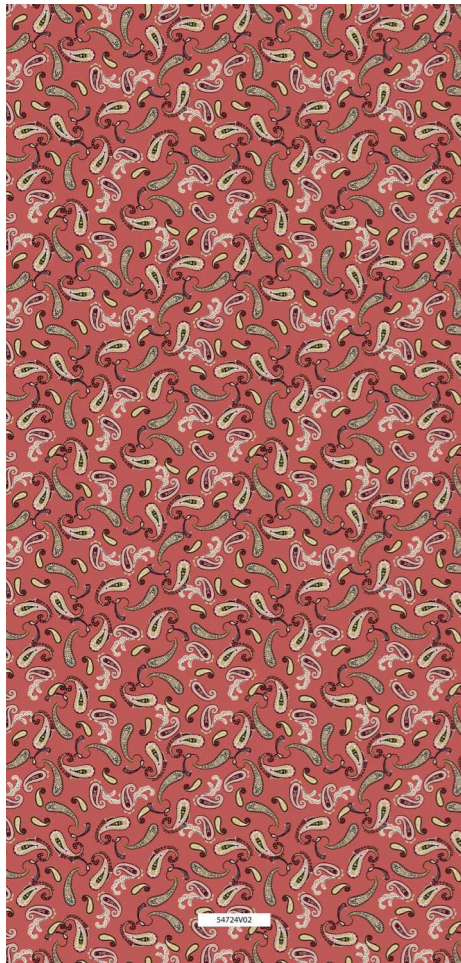
↓ AW · ANIMALIER MAN ^{V04}



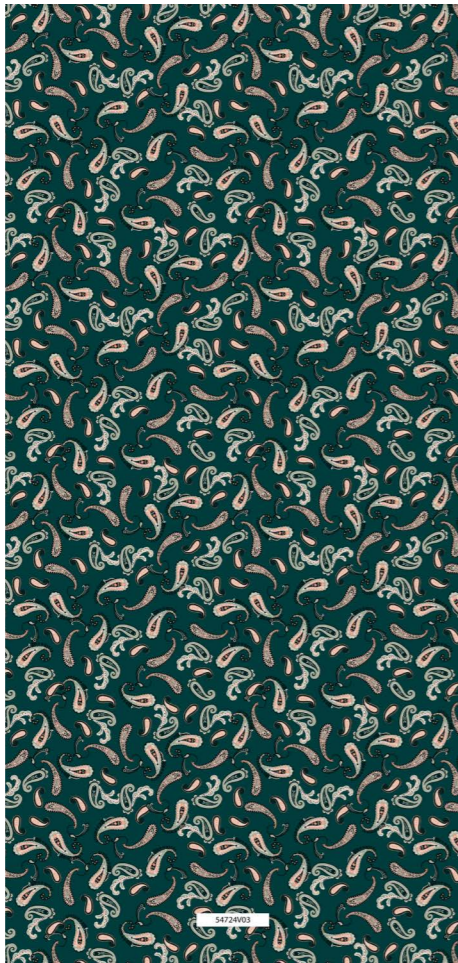
↓ AW · ETHNIC MAN^{V01}



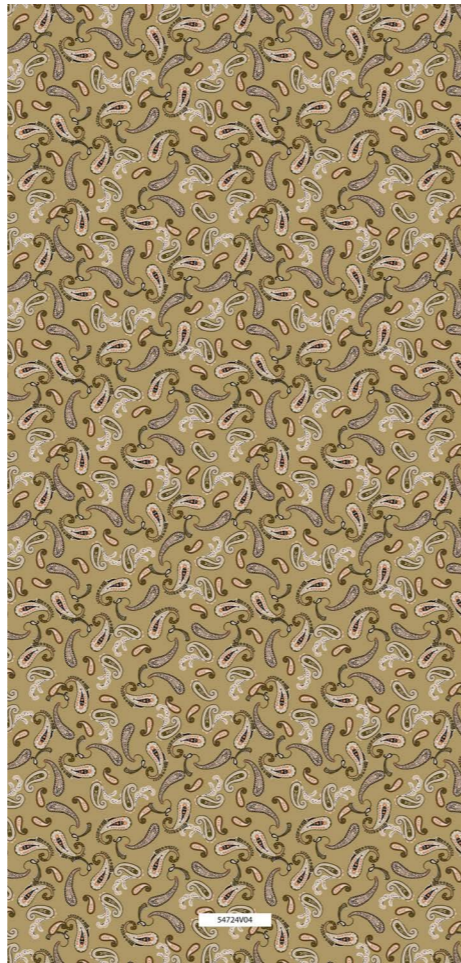
↓ AW · CONVERSATIONAL^{V01}
MAN



↓ AW · ETHNIC^{V02}
MAN



↓ AW · ETHNIC^{V03}
MAN



↓ AW · ETHNIC^{V04}
MAN



↓ AW · CONVERSATIONAL^{V02}
MAN



↓ AW · CONVERSATIONAL^{V02}
MAN



↓ AW · CONVERSATIONAL^{V02}
MAN

SUBLIMATION

PRINTING

SUBLIMATION PRINTING + APPLICATION

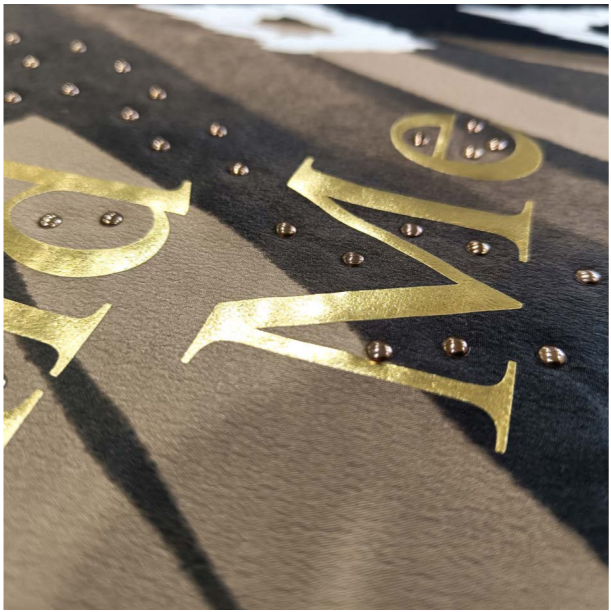


MYLAR FILM GOLD

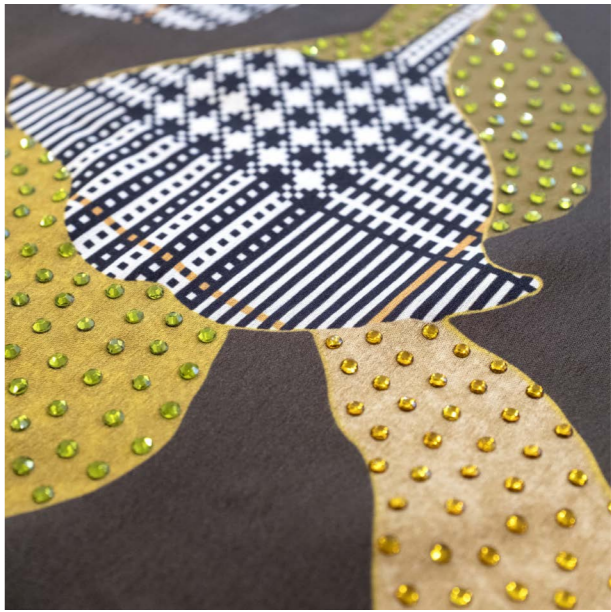


MYLAR FILM GOLD/BUTTON

SUBLIMATION PRINTING + APPLICATION

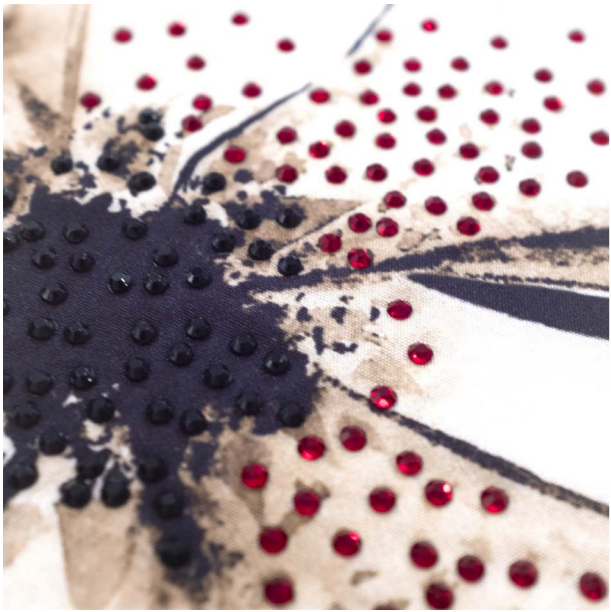
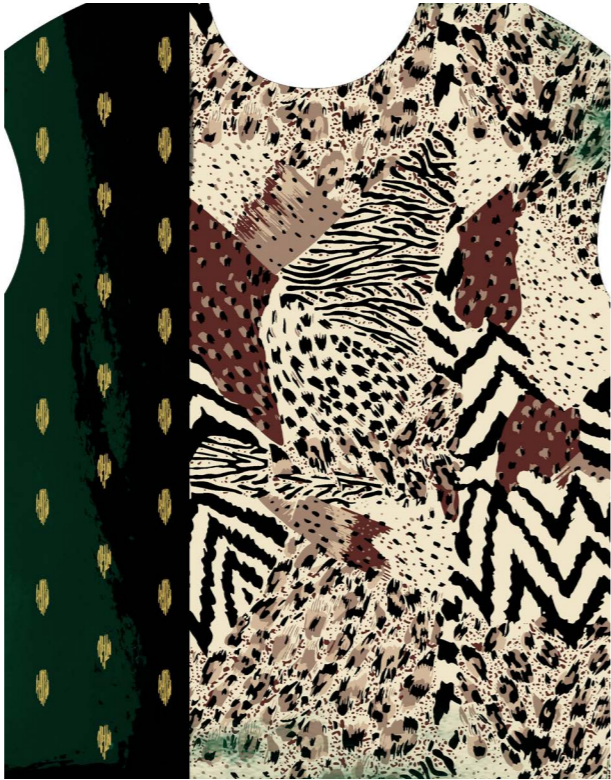


MYLAR GOLD/STUDS



GREEN/YELLOW STRASS

SUBLIMATION PRINTING + APPLICATION

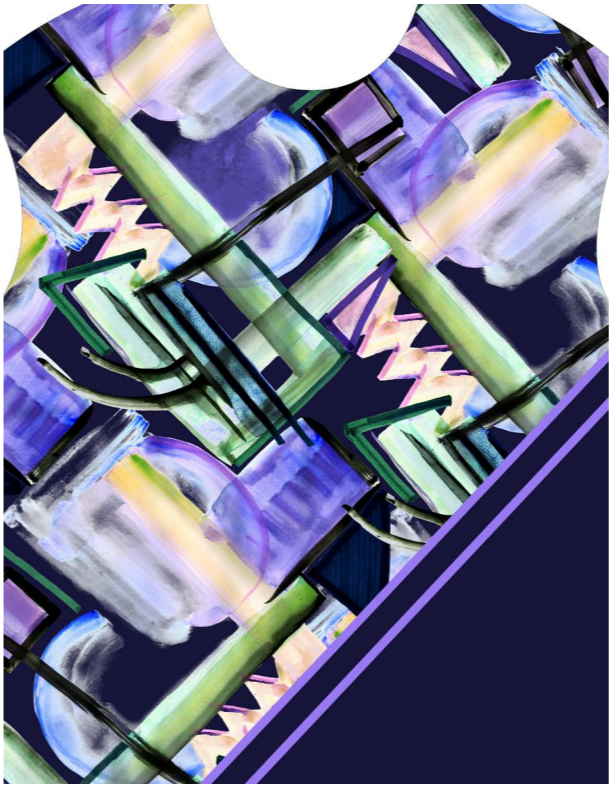


RED/BLACK STRASS

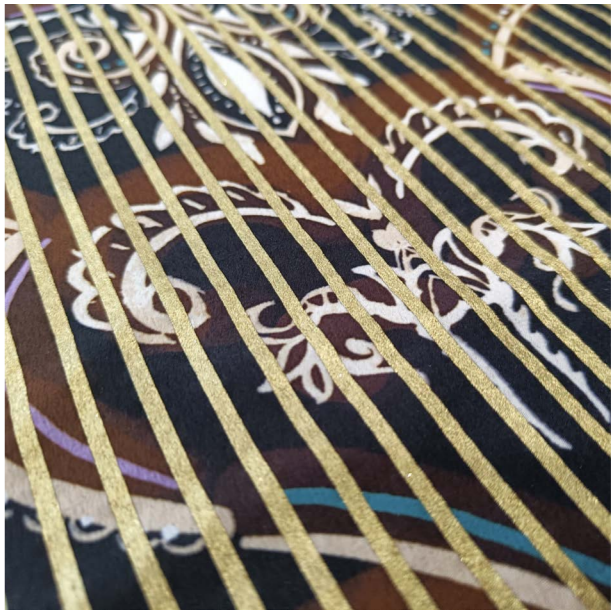


GOLDEN SPHERE

SUBLIMATION PRINTING + APPLICATION



GOLDEN PASTE



GOLDEN PASTE

SCREEN

PRINTING

SCREEN PRINTING + APPLICATION



STRASSE/BLACK ROCK



STRASS/BLU CORAL

SCREEN PRINTING + APPLICATION



THICKNESS/MACULA



STRASS/SILVER ROCK



PLOTTER/PURPLE STRASS



GOLDEN PASTE/PLOTTER



PERL/STRASS



BLACK CORAL



SEDE LEGALE: VIA V.GIORDANO, 49 — 80040 TERZIGNO (NA) — P.I.02289300978
SEDE OPERATIVA: VIA LAVINAIO I° TRATTO, 18BIS — 80044 OTTAVIANO (NA) — TEL: 0815296404

